

## Anti-CYP4Z1/2 antibody (Internal) (STJ92605)

STJ92605

### GENERAL INFORMATION

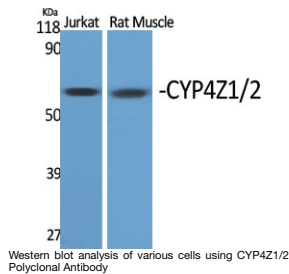
<b>Product Type</b>	Primary antibodies
<b>Short Description</b>	Rabbit polyclonal antibody anti-Cytochrome P450 4Z1 and Putative inactive cytochrome P450 family member 4Z2 (Internal) is suitable for use in Western Blot, Immunohistochemistry, Immunofluorescence and ELISA research applications.
<b>Applications</b>	WB, IHC-P, IF-P, ELISA
<b>Host/Source</b>	Rabbit
<b>Reactivity</b>	Human, Rat, Mouse

### PRODUCT PROPERTIES

<b>Clonality</b>	Polyclonal
<b>Clone ID</b>	
<b>Concentration</b>	1 mg/mL
<b>Conjugation</b>	Unconjugated
<b>Purification</b>	The antibody was affinity-purified from rabbit anti-serum by affinity-chromatography.
<b>Dilution</b>	IHC 1:100-1:300
<b>Range</b>	ELISA 1:40000
<b>Formulation</b>	PBS, 50% Glycerol, 0.5% BSA and 0.02% Sodium Azide.
<b>Isotype</b>	IgG
<b>Storage</b>	Store at -20°C for up to 1 year from the date of receipt, and avoid repeat freeze-thaw cycles.
<b>Instruction</b>	

### TARGET INFORMATION

<b>Gene ID</b>	<a href="#">199974</a>
	<a href="#">NA</a>
<b>Gene Symbol</b>	<a href="#">CYP4Z1</a>
	<a href="#">CYP4Z2P</a>
<b>Uniprot ID</b>	<a href="#">CP4Z1_HUMAN</a>
	<a href="#">CP4Z2_HUMAN</a>
<b>Immunogen</b>	Synthesized peptide derived from the Internal region of human CYP4Z1/2.
<b>Immunogen Region</b>	Internal
<b>Specificity</b>	CYP4Z1/2 polyclonal antibody (Cytochrome P450 4Z1 and Putative inactive cytochrome P450 family member 4Z2) binds to endogenous Cytochrome P450 4Z1 and Putative inactive cytochrome P450 family member 4Z2 at the amino acid region Internal.
<b>Immunogen Sequence</b>	



This product is suitable for in-vitro studies under the RESEARCH USE ONLY [RUO] licence. This product must not be used as for diagnostic or other medical purposes.  
 St John's Laboratory Ltd, Knowledge Dock Business Centre, University Way, London, E16 2RD | Tel: 0208 223 3081