

Anti-CYP4F2 antibody (10-90 N-Term) (STJ92600)

STJ92600

GENERAL INFORMATION

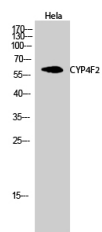
Product Type	Primary antibodies
Short Description	Rabbit polyclonal antibody anti-Cytochrome P450 4f2 (10-90 N-Term) is suitable for use in Western Blot, Immunohistochemistry, Immunofluorescence and ELISA research applications.
Applications	WB, IHC-P, IF-P, ELISA
Host/Source	Rabbit
Reactivity	Human, Rat, Mouse

PRODUCT PROPERTIES

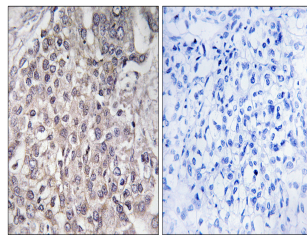
Clonality	Polyclonal
Clone ID	
Concentration	1 mg/mL
Conjugation	Unconjugated
Purification	The antibody was affinity-purified from rabbit anti-serum by affinity-chromatography.
Dilution Range	WB 1:500-1:2000 IHC 1:100-1:300 ELISA 1:40000
Formulation	PBS, 50% Glycerol, 0.5% BSA and 0.02% Sodium Azide.
Isotype	IgG
Storage Instruction	Store at -20°C for up to 1 year from the date of receipt, and avoid repeat freeze-thaw cycles.

TARGET INFORMATION

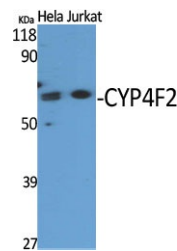
Gene ID	8529
Gene Symbol	CYP4F2
Uniprot ID	CP4F2_HUMAN
Immunogen	The antiserum was produced against synthesized peptide derived from human CYP4F2 at amino acid range 41-90
Immunogen Region	10-90 N-Term
Specificity	CYP4F2 polyclonal antibody (Cytochrome P450 4f2) binds to endogenous Cytochrome P450 4f2 at the amino acid region 10-90 N-Term.
Immunogen Sequence	



Western blot analysis of HeLa cells using CYP4F2 Polyclonal Antibody



Immunohistochemistry analysis of paraffin-embedded human liver carcinoma, using Cytochrome P450 4F2 Antibody. The picture on the right is blocked with the synthesized peptide.



Western blot analysis of various cells using CYP4F2 Polyclonal Antibody

This product is suitable for in-vitro studies under the RESEARCH USE ONLY [RUO] licence. This product must not be used as for diagnostic or other medical purposes.
St John's Laboratory Ltd, Knowledge Dock Business Centre, University Way, London, E16 2RD | Tel: 0208 223 3081