

Anti-CYP4F11 antibody (310-390 Internal) (STJ92599)

STJ92599

GENERAL INFORMATION

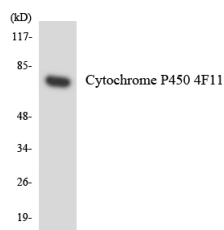
Product Type	Primary antibodies
Short Description	Rabbit polyclonal antibody anti-Cytochrome P450 4f11 (310-390 Internal) is suitable for use in Western Blot and ELISA research applications.
Applications	WB, ELISA
Host/Source	Rabbit
Reactivity	Human, Rat, Mouse

PRODUCT PROPERTIES

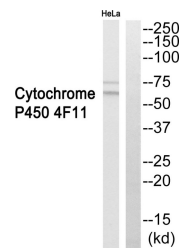
Clonality	Polyclonal
Clone ID	
Concentration	1 mg/mL
Conjugation	Unconjugated
Purification	The antibody was affinity-purified from rabbit anti-serum by affinity-chromatography.
Dilution Range	WB 1:500-1:2000 ELISA 1:5000
Formulation	PBS, 50% Glycerol, 0.5% BSA and 0.02% Sodium Azide.
Isotype	IgG
Storage Instruction	Store at -20°C for up to 1 year from the date of receipt, and avoid repeat freeze-thaw cycles.

TARGET INFORMATION

Gene ID	57834
Gene Symbol	CYP4F11
Uniprot ID	CP4FB_HUMAN
Immunogen	The antiserum was produced against synthesized peptide derived from human Cytochrome P450 4F11 at amino acid range 341-390
Immunogen Region	310-390 Internal
Specificity	CYP4F11 polyclonal antibody (Cytochrome P450 4f11) binds to endogenous Cytochrome P450 4f11 at the amino acid region 310-390 Internal.
Immunogen Sequence	



Western blot analysis of the lysates from COLO205 cells using Cytochrome P450 4F11 antibody.



Western blot analysis of Cytochrome P450 4F11 Antibody. The lane on the right is blocked with the Cytochrome P450 4F11 peptide.

This product is suitable for in-vitro studies under the RESEARCH USE ONLY [RUO] licence. This product must not be used as for diagnostic or other medical purposes.
St John's Laboratory Ltd, Knowledge Dock Business Centre, University Way, London, E16 2RD | Tel: 0208 223 3081