

Anti-CYP4B1 antibody (110-190 Internal) (STJ92598)

STJ92598

GENERAL INFORMATION

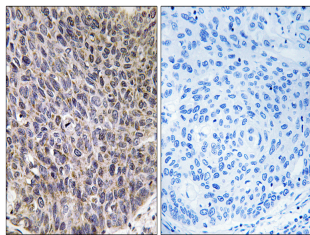
Product Type	Primary antibodies
Short Description	Rabbit polyclonal antibody anti-Cytochrome P450 4b1 (110-190 Internal) is suitable for use in Western Blot, Immunohistochemistry, Immunofluorescence and ELISA research applications.
Applications	WB, IHC-P, IF-P, ELISA
Host/Source	Rabbit
Reactivity	Human, Rat, Mouse

PRODUCT PROPERTIES

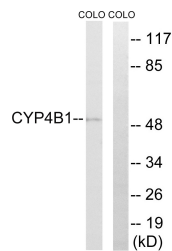
Clonality	Polyclonal
Clone ID	
Concentration	1 mg/mL
Conjugation	Unconjugated
Purification	The antibody was affinity-purified from rabbit anti-serum by affinity-chromatography.
Dilution Range	WB 1:500-1:2000 IHC 1:100-1:300 ELISA 1:40000
Formulation	PBS, 50% Glycerol, 0.5% BSA and 0.02% Sodium Azide.
Isotype	IgG
Storage Instruction	Store at -20°C for up to 1 year from the date of receipt, and avoid repeat freeze-thaw cycles.

TARGET INFORMATION

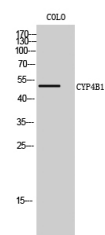
Gene ID	1580
Gene Symbol	CYP4B1
Uniprot ID	CP4B1_HUMAN
Immunogen	The antiserum was produced against synthesized peptide derived from human Cytochrome P450 4B1 at amino acid range 141-190
Immunogen Region	110-190 Internal
Specificity	CYP4B1 polyclonal antibody (Cytochrome P450 4b1) binds to endogenous Cytochrome P450 4b1 at the amino acid region 110-190 Internal.
Immunogen Sequence	



Immunohistochemistry analysis of paraffin-embedded human lung carcinoma tissue, using Cytochrome P450 4B1 Antibody. The picture on the right is blocked with the synthesized peptide.



Western blot analysis of lysates from COLO cells, using Cytochrome P450 4B1 Antibody. The lane on the right is blocked with the synthesized peptide.



Western blot analysis of COLO cells using CYP4B1 Polyclonal Antibody