

Anti-CYP4A11/22 antibody (360-440 Internal) (STJ92597)

STJ92597

GENERAL INFORMATION

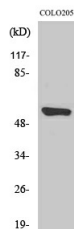
Product Type	Primary antibodies
Short Description	Rabbit polyclonal antibody anti-Cytochrome P450 4A11 and Cytochrome P450 4A22 (360-440 Internal) is suitable for use in Western Blot and ELISA research applications.
Applications	WB, ELISA
Host/Source	Rabbit
Reactivity	Human, Rat, Mouse

PRODUCT PROPERTIES

Clonality	Polyclonal
Clone ID	
Concentration	1 mg/mL
Conjugation	Unconjugated
Purification	The antibody was affinity-purified from rabbit anti-serum by affinity-chromatography.
Dilution Range	WB 1:500-1:2000 ELISA 1:40000
Formulation	PBS, 50% Glycerol, 0.5% BSA and 0.02% Sodium Azide.
Isotype	IgG
Storage Instruction	Store at -20°C for up to 1 year from the date of receipt, and avoid repeat freeze-thaw cycles.

TARGET INFORMATION

Gene ID	284541 1579
Gene Symbol	CYP4A22 CYP4A11
Uniprot ID	CP4AM_HUMAN CP4AB_HUMAN
Immunogen	The antiserum was produced against synthesized peptide derived from human Cytochrome P450 4A11/22 at amino acid range 391-440
Immunogen Region	360-440 Internal
Specificity	CYP4A11/22 polyclonal antibody (Cytochrome P450 4A11 and Cytochrome P450 4A22) binds to endogenous Cytochrome P450 4A11 and Cytochrome P450 4A22 at the amino acid region 360-440 Internal.
Immunogen Sequence	



Western blot analysis of various cells using CYP4A11/22 Polyclonal Antibody