

Anti-CYP3A7 antibody (200-280 Internal) (STJ92596)

STJ92596

GENERAL INFORMATION

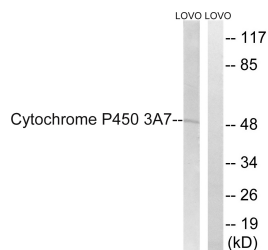
Product Type	Primary antibodies
Short Description	Rabbit polyclonal antibody anti-Cytochrome P450 3a7 (200-280 Internal) is suitable for use in Western Blot and ELISA research applications.
Applications	WB, ELISA
Host/Source	Rabbit
Reactivity	Human, Rat, Mouse

PRODUCT PROPERTIES

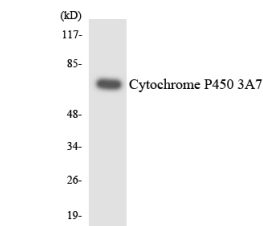
Clonality	Polyclonal
Clone ID	
Concentration	1 mg/mL
Conjugation	Unconjugated
Purification	The antibody was affinity-purified from rabbit anti-serum by affinity-chromatography.
Dilution Range	WB 1:500-1:2000 ELISA 1:20000
Formulation	PBS, 50% Glycerol, 0.5% BSA and 0.02% Sodium Azide.
Isotype	IgG
Storage Instruction	Store at -20°C for up to 1 year from the date of receipt, and avoid repeat freeze-thaw cycles.

TARGET INFORMATION

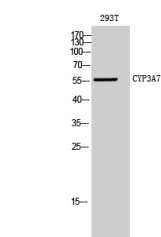
Gene ID	100861540/1551
Gene Symbol	CYP3A7
Uniprot ID	CP3A7_HUMAN
Immunogen	The antiserum was produced against synthesized peptide derived from human Cytochrome P450 3A7 at amino acid range 231-280
Immunogen Region	200-280 Internal
Specificity	CYP3A7 polyclonal antibody (Cytochrome P450 3a7) binds to endogenous Cytochrome P450 3a7 at the amino acid region 200-280 Internal.
Immunogen Sequence	



Western blot analysis of lysates from LOVO cells, using Cytochrome P450 3A7 Antibody. The lane on the right is blocked with the synthesized peptide.



Western blot analysis of the lysates from K562 cells using Cytochrome P450 3A7 antibody.



Western blot analysis of 293T cells using CYP3A7 Polyclonal Antibody diluted at 1: 500

This product is suitable for in-vitro studies under the RESEARCH USE ONLY [RUO] licence. This product must not be used as for diagnostic or other medical purposes.
St John's Laboratory Ltd, Knowledge Dock Business Centre, University Way, London, E16 2RD | Tel: 0208 223 3081