

Anti-CYP39A1 antibody (Internal) (STJ92592)

STJ92592

GENERAL INFORMATION

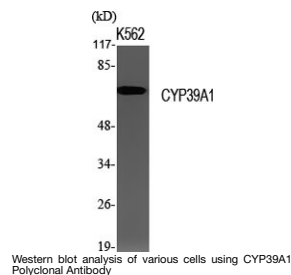
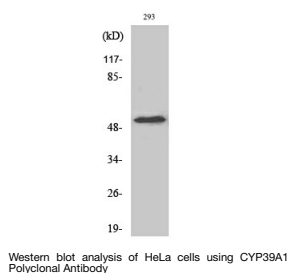
Product Type	Primary antibodies
Short Description	Rabbit polyclonal antibody anti-24-Hydroxycholesterol 7-Alpha-Hydroxylase (Internal) is suitable for use in Western Blot, Immunohistochemistry, Immunofluorescence and ELISA research applications.
Applications	WB, IHC-P, IF-P, ELISA
Host/Source	Rabbit
Reactivity	Human, Rat, Mouse

PRODUCT PROPERTIES

Clonality	Polyclonal
Clone ID	
Concentration	1 mg/mL
Conjugation	Unconjugated
Purification	The antibody was affinity-purified from rabbit anti-serum by affinity-chromatography.
Dilution Range	WB 1:500-1:2000 IHC 1:100-1:300 ELISA 1:40000
Formulation	PBS, 50% Glycerol, 0.5% BSA and 0.02% Sodium Azide.
Isotype	IgG
Storage Instruction	Store at -20°C for up to 1 year from the date of receipt, and avoid repeat freeze-thaw cycles.

TARGET INFORMATION

Gene ID	51302
Gene Symbol	CYP39A1
Uniprot ID	CP39A_HUMAN
Immunogen	Synthesized peptide derived from the Internal region of human CYP39A1.
Immunogen Region	Internal
Specificity	CYP39A1 polyclonal antibody (24-Hydroxycholesterol 7-Alpha-Hydroxylase) binds to endogenous 24-Hydroxycholesterol 7-Alpha-Hydroxylase at the amino acid region Internal.
Immunogen Sequence	



This product is suitable for in-vitro studies under the RESEARCH USE ONLY [RUO] licence. This product must not be used as for diagnostic or other medical purposes.
St John's Laboratory Ltd, Knowledge Dock Business Centre, University Way, London, E16 2RD | Tel: 0208 223 3081