

Anti-CYP2W1 antibody (280-360 Internal) (STJ92590)

STJ92590

GENERAL INFORMATION

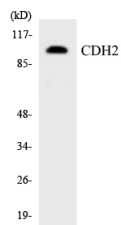
Product Type	Primary antibodies
Short Description	Rabbit polyclonal antibody anti-Cytochrome P450 2w1 (280-360 Internal) is suitable for use in Western Blot, Immunohistochemistry, Immunofluorescence, Immunocytochemistry and ELISA research applications.
Applications	WB, IHC-P, IF, ICC, ELISA
Host/Source	Rabbit
Reactivity	Human, Rat, Mouse

PRODUCT PROPERTIES

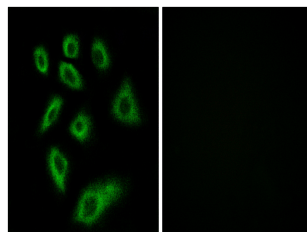
Clonality	Polyclonal
Clone ID	
Concentration	1 mg/mL
Conjugation	Unconjugated
Purification	The antibody was affinity-purified from rabbit anti-serum by affinity-chromatography.
Dilution Range	WB 1:500-1:2000 IHC 1:100-1:300 IF 1:200-1:1000 ELISA 1:40000
Formulation	PBS, 50% Glycerol, 0.5% BSA and 0.02% Sodium Azide.
Isotype	IgG
Storage Instruction	Store at -20°C for up to 1 year from the date of receipt, and avoid repeat freeze-thaw cycles.

TARGET INFORMATION

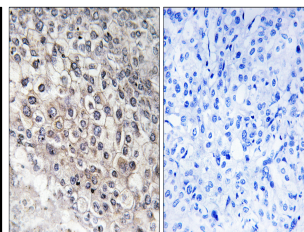
Gene ID	54905
Gene Symbol	CYP2W1
Uniprot ID	CP2W1_HUMAN
Immunogen	The antiserum was produced against synthesized peptide derived from human Cytochrome P450 2W1 at amino acid range 311-360
Immunogen Region	280-360 Internal
Specificity	CYP2W1 polyclonal antibody (Cytochrome P450 2w1) binds to endogenous Cytochrome P450 2w1 at the amino acid region 280-360 Internal.
Immunogen Sequence	



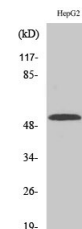
Western blot analysis of the lysates from HT-29 cells using CDH2 antibody.



Immunofluorescence analysis of HUVEC cells, using Cytochrome P450 2W1 Antibody. The picture on the right is blocked with the synthesized peptide.



Immunohistochemistry analysis of paraffin-embedded human liver carcinoma tissue, using Cytochrome P450 2W1 Antibody. The picture on the right is blocked with the synthesized peptide.



Western blot analysis of various cells using CYP2W1 Polyclonal Antibody

This product is suitable for in-vitro studies under the RESEARCH USE ONLY [RUO] licence. This product must not be used as for diagnostic or other medical purposes.
St John's Laboratory Ltd, Knowledge Dock Business Centre, University Way, London, E16 2RD | Tel: 0208 223 3081