

Anti-CYP2S1 antibody (140-220 Internal) (STJ92588)

STJ92588

GENERAL INFORMATION

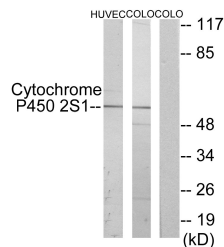
Product Type	Primary antibodies
Short Description	Rabbit polyclonal antibody anti-Cytochrome P450 2s1 (140-220 Internal) is suitable for use in Western Blot, Immunohistochemistry, Immunofluorescence, Immunocytochemistry and ELISA research applications.
Applications	WB, IHC-P, IF, ICC, ELISA
Host/Source	Rabbit
Reactivity	Human, Mouse

PRODUCT PROPERTIES

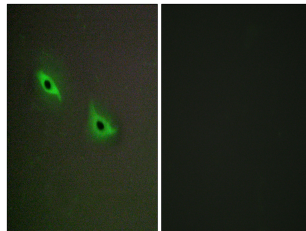
Clonality	Polyclonal
Clone ID	
Concentration	1 mg/mL
Conjugation	Unconjugated
Purification	The antibody was affinity-purified from rabbit anti-serum by affinity-chromatography.
Dilution Range	WB 1:500-1:2000 IHC 1:100-1:300 IF 1:200-1:1000 ELISA 1:5000
Formulation	PBS, 50% Glycerol, 0.5% BSA and 0.02% Sodium Azide.
Isotype	IgG
Storage Instruction	Store at -20°C for up to 1 year from the date of receipt, and avoid repeat freeze-thaw cycles.

TARGET INFORMATION

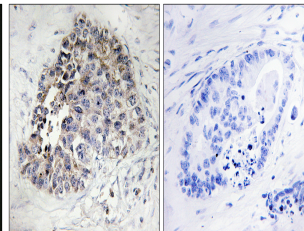
Gene ID	29785
Gene Symbol	CYP2S1
Uniprot ID	CP2S1_HUMAN
Immunogen	The antiserum was produced against synthesized peptide derived from human Cytochrome P450 2S1 at amino acid range 181-230
Immunogen Region	140-220 Internal
Specificity	CYP2S1 polyclonal antibody (Cytochrome P450 2s1) binds to endogenous Cytochrome P450 2s1 at the amino acid region 140-220 Internal.
Immunogen Sequence	



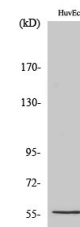
Western blot analysis of lysates from HUVEC and COLO cells, using Cytochrome P450 2S1 Antibody. The lane on the right is blocked with the synthesized peptide.



Immunofluorescence analysis of A549 cells, using Cytochrome P450 2S1 Antibody. The picture on the right is blocked with the synthesized peptide.



Immunohistochemistry analysis of paraffin-embedded human lung carcinoma tissue, using Cytochrome P450 2S1 Antibody. The picture on the right is blocked with the synthesized peptide.



Western blot analysis of various cells using CYP2S1 Polyclonal Antibody diluted at 1: 2000

This product is suitable for in-vitro studies under the RESEARCH USE ONLY [RUO] licence. This product must not be used as for diagnostic or other medical purposes.
St John's Laboratory Ltd, Knowledge Dock Business Centre, University Way, London, E16 2RD | Tel: 0208 223 3081