

Anti-CYP2D6 antibody (Internal) (STJ92584)

STJ92584

GENERAL INFORMATION

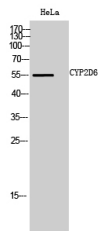
Product Type	Primary antibodies
Short Description	Rabbit polyclonal affinity-purified anti-Cytochrome P450 2d6 (Internal) is suitable for use in Western Blot and ELISA research applications.
Applications	WB, ELISA
Host/Source	Rabbit
Reactivity	Human, Rat, Mouse

PRODUCT PROPERTIES

Clonality	Polyclonal
Clone ID	
Concentration	1 mg/mL
Conjugation	Unconjugated
Purification	The antibody was affinity-purified from rabbit anti-serum by affinity-chromatography.
Dilution Range	WB 1:500-1:2000 ELISA 1:40000
Formulation	PBS, 50% Glycerol, 0.5% BSA and 0.02% Sodium Azide.
Isotype	IgG
Storage Instruction	Store at -20°C for up to 1 year from the date of receipt, and avoid repeat freeze-thaw cycles.

TARGET INFORMATION

Gene ID	1565
Gene Symbol	CYP2D6
Uniprot ID	CP2D6_HUMAN
Immunogen	Synthesized peptide derived from the Internal region of human CYP2D6.
Immunogen Region	Internal
Specificity	CYP2D6 polyclonal antibody (Cytochrome P450 2d6) binds to endogenous Cytochrome P450 2d6 at the amino acid region Internal.
Immunogen Sequence	



Western blot analysis of HeLa cells using CYP2D6 Polyclonal Antibody diluted at 1: 1000

This product is suitable for in-vitro studies under the RESEARCH USE ONLY [RUO] licence. This product must not be used as for diagnostic or other medical purposes.
St John's Laboratory Ltd, Knowledge Dock Business Centre, University Way, London, E16 2RD | Tel: 0208 223 3081