

## Anti-CYP2C8/9/18/19 antibody (80-160 Internal) (STJ92578)

STJ92578

### GENERAL INFORMATION

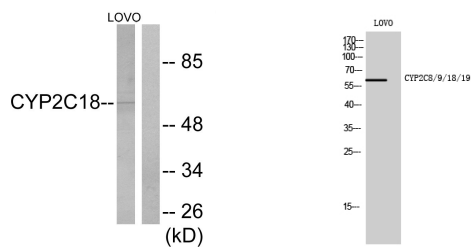
|                          |  |
|--------------------------|--|
| <b>Product Type</b>      | Primary antibodies   |
| <b>Short Description</b> | Rabbit polyclonal antibody anti-Cytochrome P450 2C8 and Cytochrome P450 2C9 and Cytochrome P450 2C18 and Cytochrome P450 2C19 (80-160 Internal) is suitable for use in Western Blot, Immunohistochemistry, Immunofluorescence, Immunocytochemistry and ELI |
| <b>Applications</b>      | WB, IHC-P, IF, ICC, ELISA  |
| <b>Host/Source</b>       | Rabbit   |
| <b>Reactivity</b>        | Human, Rat, Mouse  |

### PRODUCT PROPERTIES

|                            |  |
|----------------------------|--|
| <b>Clonality</b>           | Polyclonal   |
| <b>Clone ID</b>            |  |
| <b>Concentration</b>       | 1 mg/mL  |
| <b>Conjugation</b>         | Unconjugated   |
| <b>Purification</b>        | The antibody was affinity-purified from rabbit anti-serum by affinity-chromatography.          |
| <b>Dilution Range</b>      | WB 1:500-1:2000<br>IHC 1:100-1:300<br>IF 1:200-1:1000<br>ELISA 1:2000                          |
| <b>Formulation</b>         | PBS, 50% Glycerol, 0.5% BSA and 0.02% Sodium Azide.  |
| <b>Isotype</b>             | IgG  |
| <b>Storage Instruction</b> | Store at -20°C for up to 1 year from the date of receipt, and avoid repeat freeze-thaw cycles. |

### TARGET INFORMATION

|                           |  |
|---------------------------|--|
| <b>Gene ID</b>            | <a href="#">1562</a><br><a href="#">1558</a><br><a href="#">1559</a><br><a href="#">CYP2C18</a><br><a href="#">CYP2C8</a><br><a href="#">CP2C1_HUMAN</a><br><a href="#">CP2C8_HUMAN</a><br><a href="#">CP2C9_HUMAN</a>                                     |
| <b>Immunogen</b>          | The antiserum was produced against synthesized peptide derived from human Cytochrome P450 2C8/9/18/19 at amino acid range 111-160  |
| <b>Immunogen Region</b>   | 80-160 Internal  |
| <b>Specificity</b>        | CYP2C8/9/18/19 polyclonal antibody (Cytochrome P450 2C8 and Cytochrome P450 2C9 and Cytochrome P450 2C18 and Cytochrome P450 2C19) binds to endogenous Cytochrome P450 2C8 and Cytochrome P450 2C9 and Cytochrome P450 2C18 and Cytochrome P450 2C19 at th |
| <b>Immunogen Sequence</b> |  |



Western blot analysis of lysates from LOVO cells, using Cytochrome P450 2C8/9/18/19 Antibody. The lane on the right is blocked with the synthesized peptide.

Western blot analysis of LOVO cells using CYP2C8/9/18/19 Polyclonal Antibody

This product is suitable for in-vitro studies under the RESEARCH USE ONLY [RUO] licence. This product must not be used as for diagnostic or other medical purposes.  
 St John's Laboratory Ltd, Knowledge Dock Business Centre, University Way, London, E16 2RD | Tel: 0208 223 3081