

Anti-CYP2C8 antibody (210-290 Internal) (STJ92576)

STJ92576

GENERAL INFORMATION

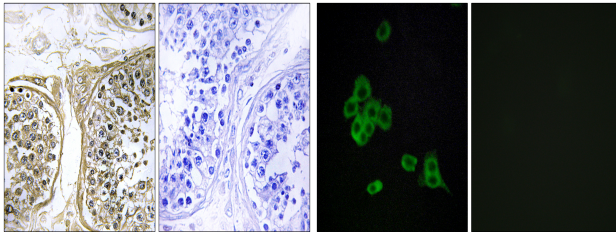
Product Type	Primary antibodies
Short Description	Rabbit polyclonal antibody anti-Cytochrome P450 2c8 (210-290 Internal) is suitable for use in Immunohistochemistry, Immunofluorescence, Immunocytochemistry and ELISA research applications.
Applications	IHC-P, IF, ICC, ELISA
Host/Source	Rabbit
Reactivity	Human, Rat, Mouse

PRODUCT PROPERTIES

Clonality	Polyclonal
Clone ID	
Concentration	1 mg/mL
Conjugation	Unconjugated
Purification	The antibody was affinity-purified from rabbit anti-serum by affinity-chromatography.
Dilution Range	IHC 1:100-1:300 IF 1:50-200 ELISA 1:20000
Formulation	PBS, 50% Glycerol, 0.5% BSA and 0.02% Sodium Azide.
Isotype	IgG
Storage Instruction	Store at -20°C for up to 1 year from the date of receipt, and avoid repeat freeze-thaw cycles.

TARGET INFORMATION

Gene ID	1558
Gene Symbol	CYP2C8
Uniprot ID	CP2C8_HUMAN
Immunogen	The antiserum was produced against synthesized peptide derived from human CYP2C8 at amino acid range 241-290
Immunogen Region	210-290 Internal
Specificity	CYP2C8 polyclonal antibody (Cytochrome P450 2c8) binds to endogenous Cytochrome P450 2c8 at the amino acid region 210-290 Internal.
Immunogen Sequence	



Immunohistochemistry analysis of paraffin-embedded human testis, using Cytochrome P450 2C8 Antibody. The picture on the right is blocked with the synthesized peptide.

Immunofluorescence analysis of Cytochrome P450 2C8 Antibody. The lane on the right is blocked with the Cytochrome P450 2C8 peptide.

This product is suitable for in-vitro studies under the RESEARCH USE ONLY [RUO] licence. This product must not be used as for diagnostic or other medical purposes.
St John's Laboratory Ltd, Knowledge Dock Business Centre, University Way, London, E16 2RD | Tel: 0208 223 3081