

Anti-CYP2A6 antibody (10-90 N-Term) (STJ92569)

STJ92569

GENERAL INFORMATION

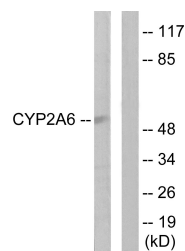
Product Type	Primary antibodies
Short Description	Rabbit polyclonal antibody anti-Cytochrome P450 2a6 (10-90 N-Term) is suitable for use in Western Blot, Immunofluorescence, Immunocytochemistry and ELISA research applications.
Applications	WB, IF, ICC, ELISA
Host/Source	Rabbit
Reactivity	Human, Rat, Mouse

PRODUCT PROPERTIES

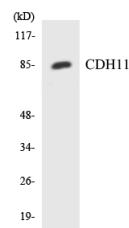
Clonality	Polyclonal
Clone ID	
Concentration	1 mg/mL
Conjugation	Unconjugated
Purification	The antibody was affinity-purified from rabbit anti-serum by affinity-chromatography.
Dilution Range	WB 1:500-1:2000 IF 1:200-1:1000 ELISA 1:20000
Formulation	PBS, 50% Glycerol, 0.5% BSA and 0.02% Sodium Azide.
Isotype	IgG
Storage Instruction	Store at -20°C for up to 1 year from the date of receipt, and avoid repeat freeze-thaw cycles.

TARGET INFORMATION

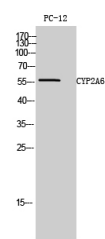
Gene ID	1548
Gene Symbol	CYP2A6
Uniprot ID	CP2A6_HUMAN
Immunogen	The antiserum was produced against synthesized peptide derived from human Cytochrome P450 2A6 at amino acid range 1-50
Immunogen Region	10-90 N-Term
Specificity	CYP2A6 polyclonal antibody (Cytochrome P450 2a6) binds to endogenous Cytochrome P450 2a6 at the amino acid region 10-90 N-Term.
Immunogen Sequence	



Western blot analysis of lysates from Jurkat cells, using Cytochrome P450 2A6 Antibody. The lane on the right is blocked with the synthesized peptide.



Western blot analysis of the lysates from RAW264.7 cells using CDH11 antibody.



Western blot analysis of PC-12 cells using CYP2A6 Polyclonal Antibody diluted at 1: 1000

This product is suitable for in-vitro studies under the RESEARCH USE ONLY [RUO] licence. This product must not be used as for diagnostic or other medical purposes.
St John's Laboratory Ltd, Knowledge Dock Business Centre, University Way, London, E16 2RD | Tel: 0208 223 3081