

Anti-CYP27A1 antibody (70-150 Internal) (STJ92567)

STJ92567

GENERAL INFORMATION

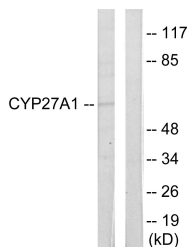
Product Type	Primary antibodies
Short Description	Rabbit polyclonal antibody anti-Sterol 26-Hydroxylase-Mitochondrial (70-150 Internal) is suitable for use in Western Blot, Immunohistochemistry, Immunofluorescence, Immunocytochemistry and ELISA research applications.
Applications	WB, IHC-P, IF, ICC, ELISA
Host/Source	Rabbit
Reactivity	Human, Rat, Mouse

PRODUCT PROPERTIES

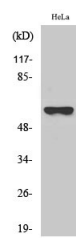
Clonality	Polyclonal
Clone ID	
Concentration	1 mg/mL
Conjugation	Unconjugated
Purification	The antibody was affinity-purified from rabbit anti-serum by affinity-chromatography.
Dilution Range	WB 1:500-1:2000 IHC 1:100-1:300 IF 1:200-1:1000 ELISA 1:10000
Formulation	PBS, 50% Glycerol, 0.5% BSA and 0.02% Sodium Azide.
Isotype	IgG
Storage Instruction	Store at -20°C for up to 1 year from the date of receipt, and avoid repeat freeze-thaw cycles.

TARGET INFORMATION

Gene ID	1593
Gene Symbol	CYP27A1
Uniprot ID	CP27A_HUMAN
Immunogen	The antiserum was produced against synthesized peptide derived from human Cytochrome P450 27A1 at amino acid range 101-150
Immunogen Region	70-150 Internal
Specificity	CYP27A1 polyclonal antibody (Sterol 26-Hydroxylase-Mitochondrial) binds to endogenous Sterol 26-Hydroxylase-Mitochondrial at the amino acid region 70-150 Internal.
Immunogen Sequence	



Western blot analysis of lysates from HeLa cells, using Cytochrome P450 27A1 Antibody. The lane on the right is blocked with the synthesized peptide.



Western blot analysis of various cells using CYP27A1 Polyclonal Antibody diluted at 1: 1000

This product is suitable for in-vitro studies under the RESEARCH USE ONLY [RUO] licence. This product must not be used as for diagnostic or other medical purposes.
St John's Laboratory Ltd, Knowledge Dock Business Centre, University Way, London, E16 2RD | Tel: 0208 223 3081