

Anti-CYP26C1 antibody (10-90 N-Term) (STJ92566)

STJ92566

GENERAL INFORMATION

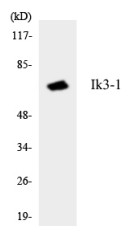
Product Type	Primary antibodies
Short Description	Rabbit polyclonal antibody anti-Cytochrome P450 26c1 (10-90 N-Term) is suitable for use in Immunohistochemistry, Immunofluorescence and ELISA research applications.
Applications	IHC-P, IF-P, ELISA
Host/Source	Rabbit
Reactivity	Human, Rat, Mouse

PRODUCT PROPERTIES

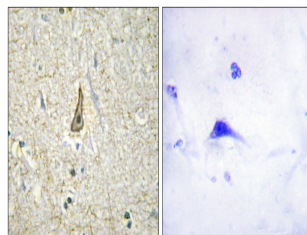
Clonality	Polyclonal
Clone ID	
Concentration	1 mg/mL
Conjugation	Unconjugated
Purification	The antibody was affinity-purified from rabbit anti-serum by affinity-chromatography.
Dilution Range	IHC 1:100-1:300 ELISA 1:40000
Formulation	PBS, 50% Glycerol, 0.5% BSA and 0.02% Sodium Azide.
Isotype	IgG
Storage Instruction	Store at -20°C for up to 1 year from the date of receipt, and avoid repeat freeze-thaw cycles.

TARGET INFORMATION

Gene ID	340665
Gene Symbol	CYP26C1
Uniprot ID	CP26C_HUMAN
Immunogen	The antiserum was produced against synthesized peptide derived from human CYP26C1 at amino acid range 41-90
Immunogen Region	10-90 N-Term
Specificity	CYP26C1 polyclonal antibody (Cytochrome P450 26c1) binds to endogenous Cytochrome P450 26c1 at the amino acid region 10-90 N-Term.
Immunogen Sequence	



Western blot analysis of the lysates from HeLa cells using Ik3-1 antibody.



Immunohistochemistry analysis of paraffin-embedded human brain, using Cytochrome P450 26c1 Antibody. The picture on the right is blocked with the synthesized peptide.

This product is suitable for in-vitro studies under the RESEARCH USE ONLY [RUO] licence. This product must not be used as for diagnostic or other medical purposes.
St John's Laboratory Ltd, Knowledge Dock Business Centre, University Way, London, E16 2RD | Tel: 0208 223 3081