

Anti-CYP20A1 antibody (160-240 Internal) (STJ92559)

STJ92559

GENERAL INFORMATION

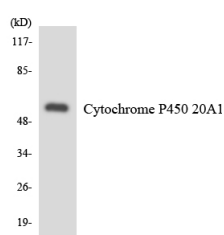
Product Type	Primary antibodies
Short Description	Rabbit polyclonal antibody anti-Cytochrome P450 20a1 (160-240 Internal) is suitable for use in Western Blot and ELISA research applications.
Applications	WB, ELISA
Host/Source	Rabbit
Reactivity	Human, Rat, Mouse

PRODUCT PROPERTIES

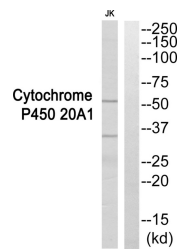
Clonality	Polyclonal
Clone ID	
Concentration	1 mg/mL
Conjugation	Unconjugated
Purification	The antibody was affinity-purified from rabbit anti-serum by affinity-chromatography.
Dilution Range	WB 1:500-1:2000 ELISA 1:40000
Formulation	PBS, 50% Glycerol, 0.5% BSA and 0.02% Sodium Azide.
Isotype	IgG
Storage Instruction	Store at -20°C for up to 1 year from the date of receipt, and avoid repeat freeze-thaw cycles.

TARGET INFORMATION

Gene ID	57404
Gene Symbol	CYP20A1
Uniprot ID	CP20A_HUMAN
Immunogen	The antiserum was produced against synthesized peptide derived from human Cytochrome P450 20A1 at amino acid range 191-240
Immunogen Region	160-240 Internal
Specificity	CYP20A1 polyclonal antibody (Cytochrome P450 20a1) binds to endogenous Cytochrome P450 20a1 at the amino acid region 160-240 Internal.
Immunogen Sequence	



Western blot analysis of the lysates from HUVEC cells using Cytochrome P450 20A1 antibody.



Western blot analysis of Cytochrome P450 20A1 Antibody. The lane on the right is blocked with the Cytochrome P450 20A1 peptide.

This product is suitable for in-vitro studies under the RESEARCH USE ONLY [RUO] licence. This product must not be used as for diagnostic or other medical purposes.
St John's Laboratory Ltd, Knowledge Dock Business Centre, University Way, London, E16 2RD | Tel: 0208 223 3081