

Anti-CYP1B1 antibody (Internal) (STJ92558)

STJ92558

GENERAL INFORMATION

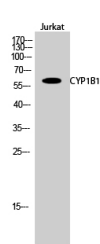
Product Type	Primary antibodies
Short Description	Rabbit polyclonal antibody anti-Cytochrome P450 1b1 (Internal) is suitable for use in Western Blot and ELISA research applications.
Applications	WB, ELISA
Host/Source	Rabbit
Reactivity	Human, Rat, Mouse

PRODUCT PROPERTIES

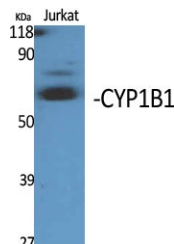
Clonality	Polyclonal
Clone ID	
Concentration	1 mg/mL
Conjugation	Unconjugated
Purification	The antibody was affinity-purified from rabbit anti-serum by affinity-chromatography.
Dilution Range	WB 1:500-1:2000 ELISA 1:40000
Formulation	PBS, 50% Glycerol, 0.5% BSA and 0.02% Sodium Azide.
Isotype	IgG
Storage Instruction	Store at -20°C for up to 1 year from the date of receipt, and avoid repeat freeze-thaw cycles.

TARGET INFORMATION

Gene ID	1545
Gene Symbol	CYP1B1
Uniprot ID	CP1B1_HUMAN
Immunogen	Synthesized peptide derived from the Internal region of human CYP1B1.
Immunogen Region	Internal
Specificity	CYP1B1 polyclonal antibody (Cytochrome P450 1b1) binds to endogenous Cytochrome P450 1b1 at the amino acid region Internal.
Immunogen Sequence	



Western blot analysis of Jurkat cells using CYP1B1 Polyclonal Antibody



Western blot analysis of various cells using CYP1B1 Polyclonal Antibody

This product is suitable for in-vitro studies under the RESEARCH USE ONLY [RUO] licence. This product must not be used as for diagnostic or other medical purposes.
St John's Laboratory Ltd, Knowledge Dock Business Centre, University Way, London, E16 2RD | Tel: 0208 223 3081