

Anti-CCND2 antibody (220-300) (STJ92539)

STJ92539

GENERAL INFORMATION

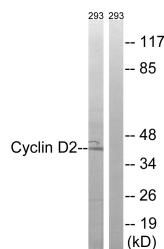
Product Type	Primary antibodies
Short Description	Rabbit polyclonal antibody anti-G1/S-Specific Cyclin-D2 (220-300) is suitable for use in Western Blot, Immunohistochemistry, Immunofluorescence and ELISA research applications.
Applications	WB, IHC-P, IF-P, ELISA
Host/Source	Rabbit
Reactivity	Human, Mouse, Rat

PRODUCT PROPERTIES

Clonality	Polyclonal
Clone ID	
Concentration	1 mg/mL
Conjugation	Unconjugated
Purification	The antibody was affinity-purified from rabbit anti-serum by affinity-chromatography.
Dilution Range	WB 1:500-1:2000 IHC 1:100-1:300 ELISA 1:20000
Formulation	PBS, 50% Glycerol, 0.5% BSA and 0.02% Sodium Azide.
Isotype	IgG
Storage Instruction	Store at -20°C for up to 1 year from the date of receipt, and avoid repeat freeze-thaw cycles.

TARGET INFORMATION

Gene ID	894
Gene Symbol	CCND2
Uniprot ID	CCND2_HUMAN
Immunogen	The antiserum was produced against synthesized peptide derived from human CCND2 at amino acid range 240-289
Immunogen Region	220-300
Specificity	CCND2 polyclonal antibody (G1/S-Specific Cyclin-D2) binds to endogenous G1/S-Specific Cyclin-D2 at the amino acid region 220-300.
Immunogen Sequence	



Western blot analysis of lysates from 293 cells, using Cyclin D2 Antibody. The lane on the right is blocked with the synthesized peptide.