

## Anti-CCNA1 antibody (380-460 C-Term) (STJ92533)

STJ92533

### GENERAL INFORMATION

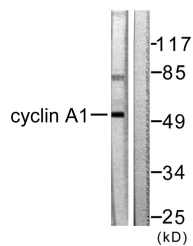
<b>Product Type</b>	Primary antibodies
<b>Short Description</b>	Rabbit polyclonal antibody anti-Cyclin-A1 (380-460 C-Term) is suitable for use in Western Blot, Immunohistochemistry, Immunofluorescence and ELISA research applications.
<b>Applications</b>	WB, IHC-P, IF-P, ELISA
<b>Host/Source</b>	Rabbit
<b>Reactivity</b>	Human, Mouse, Rat

### PRODUCT PROPERTIES

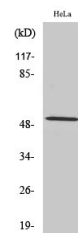
<b>Clonality</b>	Polyclonal
<b>Clone ID</b>	
<b>Concentration</b>	1 mg/mL
<b>Conjugation</b>	Unconjugated
<b>Purification</b>	The antibody was affinity-purified from rabbit anti-serum by affinity-chromatography.
<b>Dilution Range</b>	WB 1:500-1:2000 IHC 1:100-1:300 ELISA 1:40000
<b>Formulation</b>	PBS, 50% Glycerol, 0.5% BSA and 0.02% Sodium Azide.
<b>Isotype</b>	IgG
<b>Storage Instruction</b>	Store at -20°C for up to 1 year from the date of receipt, and avoid repeat freeze-thaw cycles.

### TARGET INFORMATION

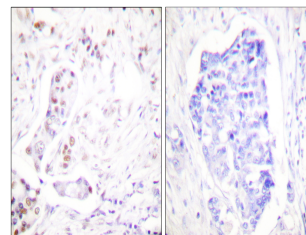
<b>Gene ID</b>	8900
<b>Gene Symbol</b>	CCNA1
<b>Uniprot ID</b>	CCNA1_HUMAN
<b>Immunogen</b>	The antiserum was produced against synthesized peptide derived from human Cyclin A1 at amino acid range 411-460
<b>Immunogen Region</b>	380-460 C-Term
<b>Specificity</b>	CCNA1 polyclonal antibody (Cyclin-A1) binds to endogenous Cyclin-A1 at the amino acid region 380-460 C-Term.
<b>Immunogen Sequence</b>	



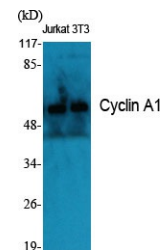
Western blot analysis of lysates from SKOV3 cells, using Cyclin A1 Antibody. The lane on the right is blocked with the synthesized peptide.



Western blot analysis of HeLa cells using Cyclin A1 Polyclonal Antibody diluted at 1: 2000



Immunohistochemistry analysis of paraffin-embedded human breast carcinoma tissue, using Cyclin A1 Antibody. The picture on the right is blocked with the synthesized peptide.



Western blot analysis of various cells using Cyclin A1 Polyclonal Antibody diluted at 1: 2000