

Anti-CYB5R1 antibody (20-100 N-Term) (STJ92530)

STJ92530

GENERAL INFORMATION

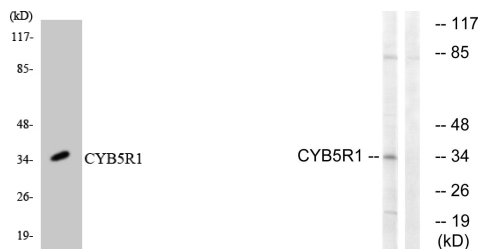
Product Type	Primary antibodies
Short Description	Rabbit polyclonal antibody anti-Nadh-Cytochrome B5 Reductase 1 (20-100 N-Term) is suitable for use in Western Blot and ELISA research applications.
Applications	WB, ELISA
Host/Source	Rabbit
Reactivity	Human, Mouse, Rat

PRODUCT PROPERTIES

Clonality	Polyclonal
Clone ID	
Concentration	1 mg/mL
Conjugation	Unconjugated
Purification	The antibody was affinity-purified from rabbit anti-serum by affinity-chromatography.
Dilution Range	WB 1:500-1:2000 ELISA 1:20000
Formulation	PBS, 50% Glycerol, 0.5% BSA and 0.02% Sodium Azide.
Isotype	IgG
Storage Instruction	Store at -20°C for up to 1 year from the date of receipt, and avoid repeat freeze-thaw cycles.

TARGET INFORMATION

Gene ID	51706
Gene Symbol	CYB5R1
Uniprot ID	NB5R1_HUMAN
Immunogen	The antiserum was produced against synthesized peptide derived from human CYB5R1 at amino acid range 9-58
Immunogen Region	20-100 N-Term
Specificity	CYB5R1 polyclonal antibody (Nadh-Cytochrome B5 Reductase 1) binds to endogenous Nadh-Cytochrome B5 Reductase 1 at the amino acid region 20-100 N-Term.
Immunogen Sequence	



Western blot analysis of the lysates from K562 cells using CYB5R1 antibody.

Western blot analysis of lysates from RAW264.7 cells, using CYB5R1 Antibody. The lane on the right is blocked with the synthesized peptide.

This product is suitable for in-vitro studies under the RESEARCH USE ONLY [RUO] licence. This product must not be used as for diagnostic or other medical purposes.
St John's Laboratory Ltd, Knowledge Dock Business Centre, University Way, London, E16 2RD | Tel: 0208 223 3081