

Anti-CYB561D2 antibody (30-110 Internal) (STJ92529)

STJ92529

GENERAL INFORMATION

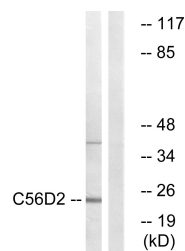
Product Type	Primary antibodies
Short Description	Rabbit polyclonal antibody anti-Transmembrane Reductase Cyb561d2 (30-110 Internal) is suitable for use in Western Blot and ELISA research applications.
Applications	WB, ELISA
Host/Source	Rabbit
Reactivity	Human, Rat, Mouse

PRODUCT PROPERTIES

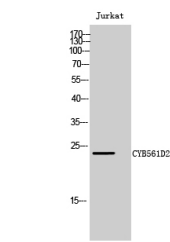
Clonality	Polyclonal
Clone ID	
Concentration	1 mg/mL
Conjugation	Unconjugated
Purification	The antibody was affinity-purified from rabbit anti-serum by affinity-chromatography.
Dilution Range	WB 1:500-1:2000 ELISA 1:20000
Formulation	PBS, 50% Glycerol, 0.5% BSA and 0.02% Sodium Azide.
Isotype	IgG
Storage	Store at -20°C for up to 1 year from the date of receipt, and avoid repeat freeze-thaw cycles.
Instruction	

TARGET INFORMATION

Gene ID	11068
Gene Symbol	CYB561D2
Uniprot ID	C56D2_HUMAN
Immunogen	The antiserum was produced against synthesized peptide derived from human C56D2 at amino acid range 55-104
Immunogen Region	30-110 Internal
Specificity	CYB561D2 polyclonal antibody (Transmembrane Reductase Cyb561d2) binds to endogenous Transmembrane Reductase Cyb561d2 at the amino acid region 30-110 Internal.
Immunogen Sequence	



Western blot analysis of lysates from Jurkat cells, using C56D2 Antibody. The lane on the right is blocked with the synthesized peptide.



Western blot analysis of Jurkat cells using C (NAD2) Polyclonal Antibody

This product is suitable for in-vitro studies under the RESEARCH USE ONLY [RUO] licence. This product must not be used as for diagnostic or other medical purposes.
St John's Laboratory Ltd, Knowledge Dock Business Centre, University Way, London, E16 2RD | Tel: 0208 223 3081