

Anti-CYB561D1 antibody (160-240 C-Term) (STJ92528)

STJ92528

GENERAL INFORMATION

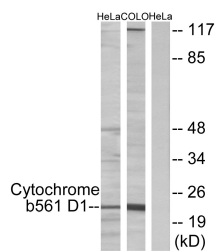
Product Type	Primary antibodies
Short Description	Rabbit polyclonal antibody anti-Probable Transmembrane Reductase Cyb561 d1 (160-240 C-Term) is suitable for use in Western Blot, Immunofluorescence, Immunocytochemistry and ELISA research applications.
Applications	WB, IF, ICC, ELISA
Host/Source	Rabbit
Reactivity	Human, Rat, Mouse

PRODUCT PROPERTIES

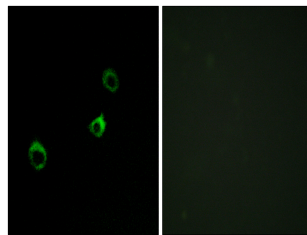
Clonality	Polyclonal
Clone ID	
Concentration	1 mg/mL
Conjugation	Unconjugated
Purification	The antibody was affinity-purified from rabbit anti-serum by affinity-chromatography.
Dilution Range	WB 1:500-1:2000 IF 1:200-1:1000 ELISA 1:40000
Formulation	PBS, 50% Glycerol, 0.5% BSA and 0.02% Sodium Azide.
Isotype	IgG
Storage Instruction	Store at -20°C for up to 1 year from the date of receipt, and avoid repeat freeze-thaw cycles.

TARGET INFORMATION

Gene ID	284613
Gene Symbol	CYB561D1
Uniprot ID	C56D1_HUMAN
Immunogen	The antiserum was produced against synthesized peptide derived from human CYB561D1 at amino acid range 180-229
Immunogen Region	160-240 C-Term
Specificity	CYB561D1 polyclonal antibody (Probable Transmembrane Reductase Cyb561d1) binds to endogenous Probable Transmembrane Reductase Cyb561d1 at the amino acid region 160-240 C-Term.
Immunogen Sequence	



Western blot analysis of lysates from HeLa cells and COLO205 cells, using Cytochrome b561 D1 Antibody. The lane on the right is blocked with the synthesized peptide.



Immunofluorescence analysis of MCF-7 cells, using Cytochrome b561 D1 Antibody. The picture on the right is blocked with the synthesized peptide.