

Anti-CUL2 antibody (670-750 C-Term) (STJ92523)

STJ92523

GENERAL INFORMATION

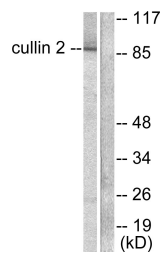
Product Type	Primary antibodies
Short Description	Rabbit polyclonal antibody anti-Cullin-2 (670-750 C-Term) is suitable for use in Western Blot, Immunohistochemistry, Immunofluorescence, Immunocytochemistry and ELISA research applications.
Applications	WB, IHC-P, IF, ICC, ELISA
Host/Source	Rabbit
Reactivity	Human, Mouse

PRODUCT PROPERTIES

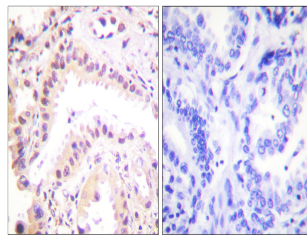
Clonality	Polyclonal
Clone ID	
Concentration	1 mg/mL
Conjugation	Unconjugated
Purification	The antibody was affinity-purified from rabbit anti-serum by affinity-chromatography.
Dilution Range	WB 1:500-1:2000 IHC 1:100-1:300 IF 1:200-1:1000 ELISA 1:20000
Formulation	PBS, 50% Glycerol, 0.5% BSA and 0.02% Sodium Azide.
Isotype	IgG
Storage Instruction	Store at -20°C for up to 1 year from the date of receipt, and avoid repeat freeze-thaw cycles.

TARGET INFORMATION

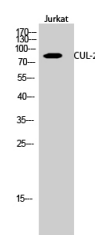
Gene ID	8453
Gene Symbol	CUL2
Uniprot ID	CUL2_HUMAN
Immunogen	The antiserum was produced against synthesized peptide derived from human Cullin 2 at amino acid range 696-745
Immunogen Region	670-750 C-Term
Specificity	CUL2 polyclonal antibody (Cullin-2) binds to endogenous Cullin-2 at the amino acid region 670-750 C-Term.
Immunogen Sequence	



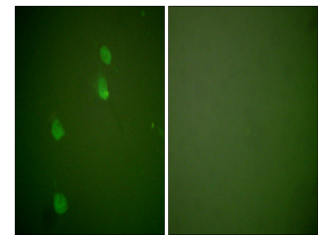
Western blot analysis of lysates from LOVO cells, using Cullin 2 Antibody. The lane on the right is blocked with the synthesized peptide.



Immunohistochemistry analysis of paraffin-embedded human lung carcinoma tissue, using Cullin 2 Antibody. The picture on the right is blocked with the synthesized peptide.



Western blot analysis of Jurkat cells using CUL-2 Polyclonal Antibody diluted at 1: 2000



Immunofluorescence analysis of NIH/3T3 cells, using Cullin 2 Antibody. The picture on the right is blocked with the synthesized peptide.