

Anti-CUL1 antibody (700-780 C-Term) (STJ92522)

STJ92522

GENERAL INFORMATION

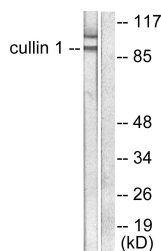
Product Type	Primary antibodies
Short Description	Rabbit polyclonal antibody anti-Cullin-1 (700-780 C-Term) is suitable for use in Western Blot, Immunohistochemistry, Immunofluorescence, Immunocytochemistry and ELISA research applications.
Applications	WB, IHC-P, IF, ICC, ELISA
Host/Source	Rabbit
Reactivity	Human, Mouse

PRODUCT PROPERTIES

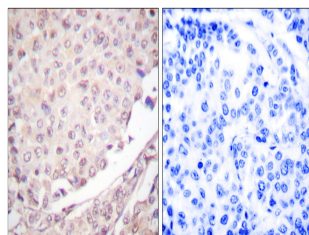
Clonality	Polyclonal
Clone ID	
Concentration	1 mg/mL
Conjugation	Unconjugated
Purification	The antibody was affinity-purified from rabbit anti-serum by affinity-chromatography.
Dilution Range	WB 1:500-1:2000 IHC 1:100-1:300 IF 1:200-1:1000 ELISA 1:20000
Formulation	PBS, 50% Glycerol, 0.5% BSA and 0.02% Sodium Azide.
Isotype	IgG
Storage Instruction	Store at -20°C for up to 1 year from the date of receipt, and avoid repeat freeze-thaw cycles.

TARGET INFORMATION

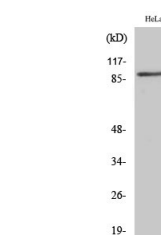
Gene ID	8454
Gene Symbol	CUL1
Uniprot ID	CUL1_HUMAN
Immunogen	The antiserum was produced against synthesized peptide derived from human Cullin 1 at amino acid range 727-776
Immunogen Region	700-780 C-Term
Specificity	CUL1 polyclonal antibody (Cullin-1) binds to endogenous Cullin-1 at the amino acid region 700-780 C-Term.
Immunogen Sequence	



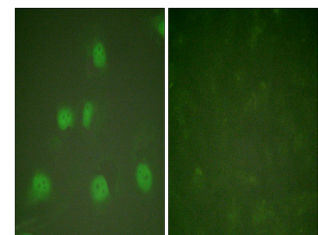
Western blot analysis of lysates from HeLa cells, using Cullin 1 Antibody. The lane on the right is blocked with the synthesized peptide.



Immunohistochemistry analysis of paraffin-embedded human lung carcinoma tissue, using Cullin 1 Antibody. The picture on the right is blocked with the synthesized peptide.



Western blot analysis of HeLa cells using CUL-1 Polyclonal Antibody



Immunofluorescence analysis of HeLa cells, using Cullin 1 Antibody. The picture on the right is blocked with the synthesized peptide.