

Anti-CTBP1 antibody (360-440) (STJ92513)

STJ92513

GENERAL INFORMATION

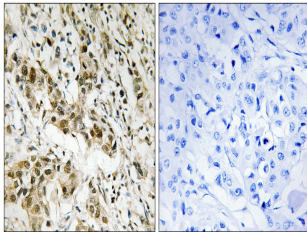
Product Type	Primary antibodies
Short Description	Rabbit polyclonal antibody anti-C-Terminal-Binding Protein 1 (360-440) is suitable for use in Western Blot, Immunohistochemistry, Immunofluorescence and ELISA research applications.
Applications	WB, IHC-P, IF-P, ELISA
Host/Source	Rabbit
Reactivity	Human, Mouse, Rat

PRODUCT PROPERTIES

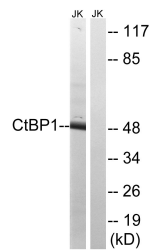
Clonality	Polyclonal
Clone ID	
Concentration	1 mg/mL
Conjugation	Unconjugated
Purification	The antibody was affinity-purified from rabbit anti-serum by affinity-chromatography.
Dilution Range	WB 1:500-1:2000 IHC 1:100-1:300 ELISA 1:20000
Formulation	PBS, 50% Glycerol, 0.5% BSA and 0.02% Sodium Azide.
Isotype	IgG
Storage Instruction	Store at -20°C for up to 1 year from the date of receipt, and avoid repeat freeze-thaw cycles.

TARGET INFORMATION

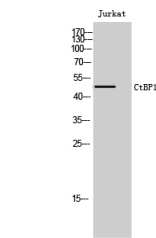
Gene ID	1487
Gene Symbol	CTBP1
Uniprot ID	CTBP1_HUMAN
Immunogen	The antiserum was produced against synthesized peptide derived from human CtBP1 at amino acid range 388-437
Immunogen Region	360-440
Specificity	CTBP1 polyclonal antibody (C-Terminal-Binding Protein 1) binds to endogenous C-Terminal-Binding Protein 1 at the amino acid region 360-440.
Immunogen Sequence	



Immunohistochemistry analysis of paraffin-embedded human breast carcinoma tissue, using CtBP1 Antibody. The picture on the right is blocked with the synthesized peptide.



Western blot analysis of lysates from Jurkat cells, using CtBP1 Antibody. The lane on the right is blocked with the synthesized peptide.



Western blot analysis of Jurkat cells using CtBP1 Polyclonal Antibody