

Anti-CSTF2T antibody (60-140 Internal) (STJ92511)

STJ92511

GENERAL INFORMATION

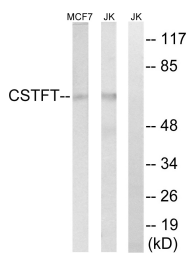
Product Type	Primary antibodies
Short Description	Rabbit polyclonal antibody anti-Cleavage Stimulation Factor Subunit 2 Tau Variant (60-140 Internal) is suitable for use in Western Blot, Immunohistochemistry, Immunofluorescence and ELISA research applications.
Applications	WB, IHC-P, IF-P, ELISA
Host/Source	Rabbit
Reactivity	Human, Mouse, Rat

PRODUCT PROPERTIES

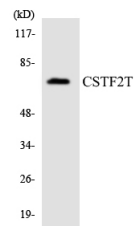
Clonality	Polyclonal
Clone ID	
Concentration	1 mg/mL
Conjugation	Unconjugated
Purification	The antibody was affinity-purified from rabbit anti-serum by affinity-chromatography.
Dilution Range	WB 1:500-1:2000 IHC 1:100-1:300 ELISA 1:40000
Formulation	PBS, 50% Glycerol, 0.5% BSA and 0.02% Sodium Azide.
Isotype	IgG
Storage Instruction	Store at 20°C for up to 1 year from the date of receipt, and avoid repeat freeze-thaw cycles.

TARGET INFORMATION

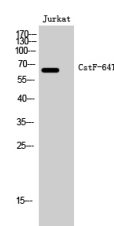
Gene ID	23283
Gene Symbol	CSTF2T
Uniprot ID	CSTFT_HUMAN
Immunogen	The antiserum was produced against synthesized peptide derived from human CSTF2T at amino acid range 91-140
Immunogen Region	60-140 Internal
Specificity	CSTF2T polyclonal antibody (Cleavage Stimulation Factor Subunit 2 Tau Variant) binds to endogenous Cleavage Stimulation Factor Subunit 2 Tau Variant at the amino acid region 60-140 Internal.
Immunogen Sequence	



Western blot analysis of lysates from Jurkat and MCF-7 cells, using CSTF2T Antibody. The lane on the right is blocked with the synthesized peptide.



Western blot analysis of the lysates from Jurkat cells using CSTF2T antibody.



Western blot analysis of Jurkat cells using CstF-64T Polyclonal Antibody cells nucleus extracted by Minute™ Cytoplasmic and Nuclear Fractionation kit (SC-003, InventorTech, MN, USA).

This product is suitable for in-vitro studies under the RESEARCH USE ONLY [RUO] licence. This product must not be used as for diagnostic or other medical purposes.
St John's Laboratory Ltd, Knowledge Dock Business Centre, University Way, London, E16 2RD | Tel: 0208 223 3081