

Anti-CSTF2 antibody (30-110 N-Term) (STJ92510)

STJ92510

GENERAL INFORMATION

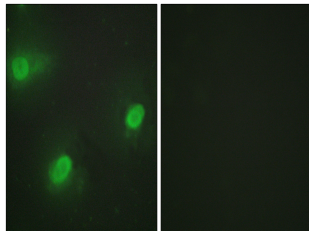
Product Type	Primary antibodies
Short Description	Rabbit polyclonal antibody anti-Cleavage Stimulation Factor Subunit 2 (30-110 N-Term) is suitable for use in Western Blot, Immunohistochemistry, Immunofluorescence, Immunocytochemistry and ELISA research applications.
Applications	WB, IHC-P, IF, ICC, ELISA
Host/Source	Rabbit
Reactivity	Human, Mouse

PRODUCT PROPERTIES

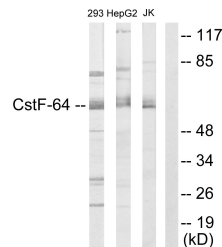
Clonality	Polyclonal
Clone ID	
Concentration	1 mg/mL
Conjugation	Unconjugated
Purification	The antibody was affinity-purified from rabbit anti-serum by affinity-chromatography.
Dilution Range	WB 1:500-1:2000 IHC 1:100-1:300 IF 1:200-1:1000 ELISA 1:5000
Formulation	PBS, 50% Glycerol, 0.5% BSA and 0.02% Sodium Azide.
Isotype	IgG
Storage Instruction	Store at -20°C for up to 1 year from the date of receipt, and avoid repeat freeze-thaw cycles.

TARGET INFORMATION

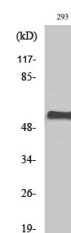
Gene ID	1478
Gene Symbol	CSTF2
Uniprot ID	CSTF2_HUMAN
Immunogen	The antiserum was produced against synthesized peptide derived from human CSTF2 at amino acid range 11-60
Immunogen Region	30-110 N-Term
Specificity	CSTF2 polyclonal antibody (Cleavage Stimulation Factor Subunit 2) binds to endogenous Cleavage Stimulation Factor Subunit 2 at the amino acid region 30-110 N-Term.
Immunogen Sequence	



Immunofluorescence analysis of HeLa cells, using CSTF2 Antibody. The picture on the right is blocked with the synthesized peptide.



Western blot analysis of lysates from 293, K562, and Jurkat cells, using CSTF2 Antibody. The lane on the right is blocked with the synthesized peptide.



Western blot analysis of various cells using CstF-64 Polyclonal Antibody diluted at 1: 1000 cells nucleus extracted by Minute TM Cytoplasmic and Nuclear Fractionation kit (SC-003, Inventibiotech, MN, USA).

This product is suitable for in-vitro studies under the RESEARCH USE ONLY [RUO] licence. This product must not be used as for diagnostic or other medical purposes.
St John's Laboratory Ltd, Knowledge Dock Business Centre, University Way, London, E16 2RD | Tel: 0208 223 3081