

Anti-CST9L antibody (50-130 Internal) (STJ92508)

STJ92508

GENERAL INFORMATION

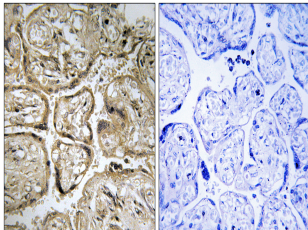
Product Type	Primary antibodies
Short Description	Rabbit polyclonal antibody anti-Cystatin-9-Like (50-130 Internal) is suitable for use in Immunohistochemistry, Immunofluorescence and ELISA research applications.
Applications	IHC-P, IF-P, ELISA
Host/Source	Rabbit
Reactivity	Human, Rat, Mouse

PRODUCT PROPERTIES

Clonality	Polyclonal
Clone ID	
Concentration	1 mg/mL
Conjugation	Unconjugated
Purification	The antibody was affinity-purified from rabbit anti-serum by affinity-chromatography.
Dilution Range	IHC 1:100-1:300 ELISA 1:10000
Formulation	PBS, 50% Glycerol, 0.5% BSA and 0.02% Sodium Azide.
Isotype	IgG
Storage Instruction	Store at -20°C for up to 1 year from the date of receipt, and avoid repeat freeze-thaw cycles.

TARGET INFORMATION

Gene ID	128821
Gene Symbol	CST9L
Uniprot ID	CST9L_HUMAN
Immunogen	The antiserum was produced against synthesized peptide derived from human CST9L at amino acid range 81-130
Immunogen Region	50-130 Internal
Specificity	CST9L polyclonal antibody (Cystatin-9-Like) binds to endogenous Cystatin-9-Like at the amino acid region 50-130 Internal.
Immunogen Sequence	



Immunohistochemistry analysis of paraffin-embedded human placenta, using CST9L Antibody. The picture on the right is blocked with the synthesized peptide.

This product is suitable for in-vitro studies under the RESEARCH USE ONLY [RUO] licence. This product must not be used as for diagnostic or other medical purposes.
St John's Laboratory Ltd, Knowledge Dock Business Centre, University Way, London, E16 2RD | Tel: 0208 223 3081