

Anti-COPS3 antibody (340-420 Internal) (STJ92499)

STJ92499

GENERAL INFORMATION

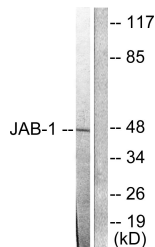
Product Type	Primary antibodies
Short Description	Rabbit polyclonal antibody anti-Cop9 Signalosome Complex Subunit 3 (340-420 Internal) is suitable for use in Western Blot, Immunohistochemistry, Immunofluorescence, Immunocytochemistry and ELISA research applications.
Applications	WB, IHC-P, IF, ICC, ELISA
Host/Source	Rabbit
Reactivity	Human, Mouse, Rat

PRODUCT PROPERTIES

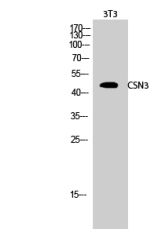
Clonality	Polyclonal
Clone ID	
Concentration	1 mg/mL
Conjugation	Unconjugated
Purification	The antibody was affinity-purified from rabbit anti-serum by affinity-chromatography.
Dilution Range	WB 1:500-1:2000 IHC 1:100-1:300 IF 1:200-1:1000 ELISA 1:10000
Formulation	PBS, 50% Glycerol, 0.5% BSA and 0.02% Sodium Azide.
Isotype	IgG
Storage Instruction	Store at -20°C for up to 1 year from the date of receipt, and avoid repeat freeze-thaw cycles.

TARGET INFORMATION

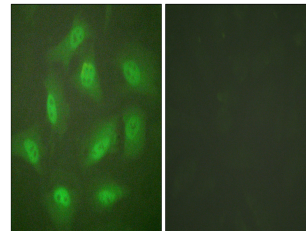
Gene ID	8533
Gene Symbol	COPS3
Uniprot ID	CSN3_HUMAN
Immunogen	The antiserum was produced against synthesized peptide derived from human JAB1 at amino acid range 374-423
Immunogen Region	340-420 Internal
Specificity	COPS3 polyclonal antibody (Cop9 Signalosome Complex Subunit 3) binds to endogenous Cop9 Signalosome Complex Subunit 3 at the amino acid region 340-420 Internal.
Immunogen Sequence	



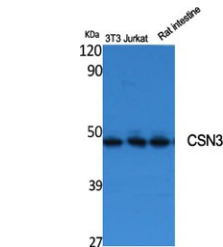
Western blot analysis of lysates from LOVO cells, using JAB1 Antibody. The lane on the right is blocked with the synthesized peptide.



Western blot analysis of 3T3 cells using CSN3 Polyclonal Antibody



Immunofluorescence analysis of HeLa cells, using JAB1 Antibody. The picture on the right is blocked with the synthesized peptide.



Western blot analysis of various cells using CSN3 Polyclonal Antibody

This product is suitable for in-vitro studies under the RESEARCH USE ONLY [RUO] licence. This product must not be used as for diagnostic or other medical purposes.
St John's Laboratory Ltd, Knowledge Dock Business Centre, University Way, London, E16 2RD | Tel: 0208 223 3081