

Anti-CSK antibody (300-380) (STJ92496)

STJ92496

GENERAL INFORMATION

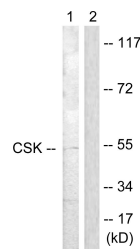
Product Type	Primary antibodies
Short Description	Rabbit polyclonal antibody anti-Tyrosine-Protein Kinase Csk (300-380) is suitable for use in Western Blot, Immunohistochemistry, Immunofluorescence and ELISA research applications.
Applications	WB, IHC-P, IF-P, ELISA
Host/Source	Rabbit
Reactivity	Human, Mouse, Rat

PRODUCT PROPERTIES

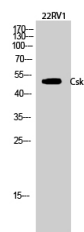
Clonality	Polyclonal
Clone ID	
Concentration	1 mg/mL
Conjugation	Unconjugated
Purification	The antibody was affinity-purified from rabbit anti-serum by affinity-chromatography.
Dilution Range	WB 1:500-1:2000 IHC 1:100-1:300 ELISA 1:20000
Formulation	PBS, 50% Glycerol, 0.5% BSA and 0.02% Sodium Azide.
Isotype	IgG
Storage Instruction	Store at -20°C for up to 1 year from the date of receipt, and avoid repeat freeze-thaw cycles.

TARGET INFORMATION

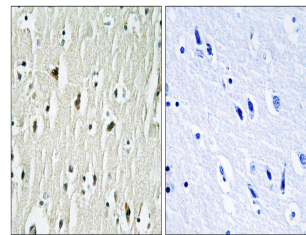
Gene ID	1445
Gene Symbol	CSK
Uniprot ID	CSK_HUMAN
Immunogen	The antiserum was produced against synthesized peptide derived from human CSK at amino acid range 330-379
Region	300-380
Specificity	CSK polyclonal antibody (Tyrosine-Protein Kinase Csk) binds to endogenous Tyrosine-Protein Kinase Csk at the amino acid region 300-380.
Immunogen Sequence	



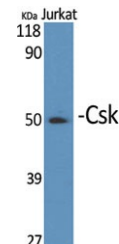
Western blot analysis of lysates from Raw264.7 cells, treated with UV 5', using CSK Antibody. The lane on the right is blocked with the synthesized peptide.



Western blot analysis of 22RV1 cells using Csk Polyclonal Antibody diluted at 1: 1000



Immunohistochemistry analysis of paraffin-embedded human brain tissue, using CSK Antibody. The picture on the right is blocked with the synthesized peptide.



Western blot analysis of various cells using Csk Polyclonal Antibody diluted at 1: 1000

This product is suitable for in-vitro studies under the RESEARCH USE ONLY [RUO] licence. This product must not be used as for diagnostic or other medical purposes.
St John's Laboratory Ltd, Knowledge Dock Business Centre, University Way, London, E16 2RD | Tel: 0208 223 3081