

Anti-MED17 antibody (110-190 Internal) (STJ92489)

STJ92489

GENERAL INFORMATION

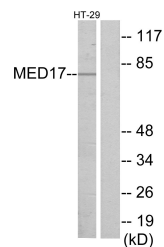
Product Type	Primary antibodies
Short Description	Rabbit polyclonal antibody anti-Mediator Of Rna Polymerase Ii Transcription Subunit 17 (110-190 Internal) is suitable for use in Western Blot, Immunohistochemistry, Immunofluorescence and ELISA research applications.
Applications	WB, IHC-P, IF-P, ELISA
Host/Source	Rabbit
Reactivity	Human, Mouse

PRODUCT PROPERTIES

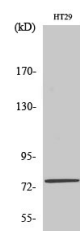
Clonality	Polyclonal
Clone ID	
Concentration	1 mg/mL
Conjugation	Unconjugated
Purification	The antibody was affinity-purified from rabbit anti-serum by affinity-chromatography.
Dilution Range	WB 1:500-1:2000 IHC 1:100-1:300 ELISA 1:10000
Formulation	PBS, 50% Glycerol, 0.5% BSA and 0.02% Sodium Azide.
Isotype	IgG
Storage Instruction	Store at 20°C for up to 1 year from the date of receipt, and avoid repeat freeze-thaw cycles.

TARGET INFORMATION

Gene ID	9440
Gene Symbol	MED17
Uniprot ID	MED17_HUMAN
Immunogen	The antiserum was produced against synthesized peptide derived from human MED17 at amino acid range 141-190
Immunogen Region	110-190 Internal
Specificity	MED17 polyclonal antibody (Mediator Of Rna Polymerase Ii Transcription Subunit 17) binds to endogenous Mediator Of Rna Polymerase Ii Transcription Subunit 17 at the amino acid region 110-190 Internal.
Immunogen Sequence	



Western blot analysis of lysates from HT-29 cells, using MED17 Antibody. The lane on the right is blocked with the synthesized peptide.



Western blot analysis of various cells using CRSP77 Polyclonal Antibody cells nucleus extracted by Minute TM Cytoplasmic and Nuclear Fractionation kit (SC-003, Inventibiotech, MN, USA).

This product is suitable for in-vitro studies under the RESEARCH USE ONLY [RUO] licence. This product must not be used as for diagnostic or other medical purposes.
St John's Laboratory Ltd, Knowledge Dock Business Centre, University Way, London, E16 2RD | Tel: 0208 223 3081