

Anti-MED26 antibody (1-80 N-Term) (STJ92488)

STJ92488

GENERAL INFORMATION

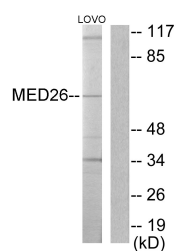
Product Type	Primary antibodies
Short Description	Rabbit polyclonal antibody anti-Mediator Of Rna Polymerase Ii Transcription Subunit 26 (1-80 N-Term) is suitable for use in Western Blot and ELISA research applications.
Applications	WB, ELISA
Host/Source	Rabbit
Reactivity	Human, Mouse

PRODUCT PROPERTIES

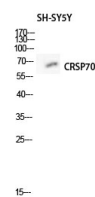
Clonality	Polyclonal
Clone ID	
Concentration	1 mg/mL
Conjugation	Unconjugated
Purification	The antibody was affinity-purified from rabbit anti-serum by affinity-chromatography.
Dilution	WB 1:500-1:2000
Range	ELISA 1:20000
Formulation	PBS, 50% Glycerol, 0.5% BSA and 0.02% Sodium Azide.
Isotype	IgG
Storage	Store at -20°C for up to 1 year from the date of receipt, and avoid repeat freeze-thaw cycles.
Instruction	

TARGET INFORMATION

Gene ID	9441
Gene Symbol	MED26
Uniprot ID	MED26_HUMAN
Immunogen	The antiserum was produced against synthesized peptide derived from human MED26 at amino acid range 1-50
Immunogen Region	1-80 N-Term
Specificity	MED26 polyclonal antibody (Mediator Of Rna Polymerase Ii Transcription Subunit 26) binds to endogenous Mediator Of Rna Polymerase Ii Transcription Subunit 26 at the amino acid region 1-80 N-Term.
Immunogen Sequence	



Western blot analysis of lysates from LOVO cells, using MED26 Antibody. The lane on the right is blocked with the synthesized peptide.



Western blot analysis of SH-SY5Y lysis using CRSP70 antibody. Antibody was diluted at 1:500 cells nucleus extracted by Minute TM Cytoplasmic and Nuclear Fractionation kit (SC-003, Inventibotech, MN, USA).

This product is suitable for in-vitro studies under the RESEARCH USE ONLY [RUO] licence. This product must not be used as for diagnostic or other medical purposes.
 St John's Laboratory Ltd, Knowledge Dock Business Centre, University Way, London, E16 2RD | Tel: 0208 223 3081