

Anti-DPYSL4 antibody (60-140 Internal) (STJ92482)

STJ92482

GENERAL INFORMATION

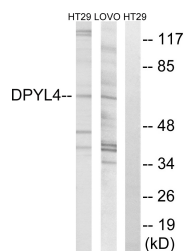
Product Type	Primary antibodies
Short Description	Rabbit polyclonal antibody anti-Dihydropyrimidinase-Related Protein 4 (60-140 Internal) is suitable for use in Western Blot and ELISA research applications.
Applications	WB, ELISA
Host/Source	Rabbit
Reactivity	Human, Mouse, Rat

PRODUCT PROPERTIES

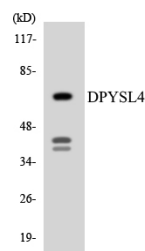
Clonality	Polyclonal
Clone ID	
Concentration	1 mg/mL
Conjugation	Unconjugated
Purification	The antibody was affinity-purified from rabbit anti-serum by affinity-chromatography.
Dilution Range	WB 1:500-1:2000 ELISA 1:10000
Formulation	PBS, 50% Glycerol, 0.5% BSA and 0.02% Sodium Azide.
Isotype	IgG
Storage Instruction	Store at -20°C for up to 1 year from the date of receipt, and avoid repeat freeze-thaw cycles.

TARGET INFORMATION

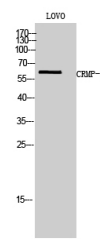
Gene ID	10570
Gene Symbol	DPYSL4
Uniprot ID	DPYL4_HUMAN
Immunogen	The antiserum was produced against synthesized peptide derived from human DPYSL4 at amino acid range 91-140
Immunogen Region	60-140 Internal
Specificity	DPYSL4 polyclonal antibody (Dihydropyrimidinase-Related Protein 4) binds to endogenous Dihydropyrimidinase-Related Protein 4 at the amino acid region 60-140 Internal.
Immunogen Sequence	



Western blot analysis of lysates from LOVO and HT-29 cells, using DPYSL4 Antibody. The lane on the right is blocked with the synthesized peptide.



Western blot analysis of the lysates from RAW264.7 cells using DPYSL4 antibody.



Western blot analysis of LOVO cells using CRMP-3 Polyclonal Antibody