

Anti-GADD45GIP1 antibody (60-140 Internal) (STJ92476)

STJ92476

GENERAL INFORMATION

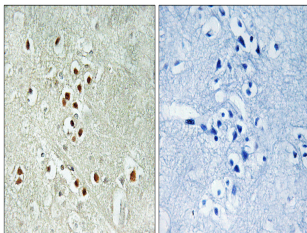
Product Type	Primary antibodies
Short Description	Rabbit polyclonal antibody anti-Growth Arrest And Dna Damage-Inducible Proteins-Interacting Protein 1 (60-140 Internal) is suitable for use in Immunohistochemistry, Immunofluorescence and ELISA research applications.
Applications	IHC-P, IF-P, ELISA
Host/Source	Rabbit
Reactivity	Human, Rat, Mouse

PRODUCT PROPERTIES

Clonality	Polyclonal
Clone ID	
Concentration	1 mg/mL
Conjugation	Unconjugated
Purification	The antibody was affinity-purified from rabbit anti-serum by affinity-chromatography.
Dilution	IHC 1:100-1:300
Range	ELISA 1:40000
Formulation	PBS, 50% Glycerol, 0.5% BSA and 0.02% Sodium Azide.
Isotype	IgG
Storage	Store at -20°C for up to 1 year from the date of receipt, and avoid repeat freeze-thaw cycles.
Instruction	

TARGET INFORMATION

Gene ID	90480
Gene Symbol	GADD45GIP1
Uniprot ID	G45IP_HUMAN
Immunogen	The antiserum was produced against synthesized peptide derived from human GADD45GIP1 at amino acid range 91-140
Immunogen Region	60-140 Internal
Specificity	GADD45GIP1 polyclonal antibody (Growth Arrest And Dna Damage-Inducible Proteins-Interacting Protein 1) binds to endogenous Growth Arrest And Dna Damage-Inducible Proteins-Interacting Protein 1 at the amino acid region 60-140 Internal.
Immunogen Sequence	



Immunohistochemistry analysis of paraffin-embedded human brain, using GADD45GIP1 Antibody. The picture on the right is blocked with the synthesized peptide.