

Anti-CRH antibody (Internal) (STJ92472)

STJ92472

GENERAL INFORMATION

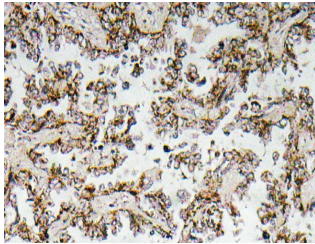
Product Type	Primary antibodies
Short Description	Rabbit polyclonal antibody anti-Corticoliberin (Internal) is suitable for use in Immunohistochemistry, Immunofluorescence and ELISA research applications.
Applications	IHC-P, IF-P, ELISA
Host/Source	Rabbit
Reactivity	Human, Rat, Mouse

PRODUCT PROPERTIES

Clonality	Polyclonal
Clone ID	
Concentration	1 mg/mL
Conjugation	Unconjugated
Purification	The antibody was affinity-purified from rabbit anti-serum by affinity-chromatography.
Dilution Range	IHC 1:100-1:300 ELISA 1:10000
Formulation	PBS, 50% Glycerol, 0.5% BSA and 0.02% Sodium Azide.
Isotype	IgG
Storage	Store at -20°C for up to 1 year from the date of receipt, and avoid repeat freeze-thaw cycles.
Instruction	

TARGET INFORMATION

Gene ID	1392
Gene Symbol	CRH
Uniprot ID	CRF_HUMAN
Immunogen	The antiserum was produced against synthesized peptide derived from human CRF at amino acid range 104-153
Immunogen Region	Internal
Specificity	CRH polyclonal antibody (Corticoliberin) binds to endogenous Corticoliberin at the amino acid region Internal.
Immunogen Sequence	



Immunohistochemistry analysis of CRF antibody in paraffin-embedded human lung carcinoma tissue.