

Anti-ATF4 antibody (160-240) (STJ92467)

STJ92467

GENERAL INFORMATION

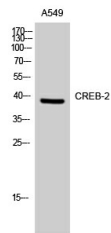
Product Type	Primary antibodies
Short Description	Rabbit polyclonal antibody anti-Cyclic Amp-Dependent Transcription Factor Atf-4 (160-240) is suitable for use in Western Blot and ELISA research applications.
Applications	WB, ELISA
Host/Source	Rabbit
Reactivity	Human, Mouse

PRODUCT PROPERTIES

Clonality	Polyclonal
Clone ID	
Concentration	1 mg/mL
Conjugation	Unconjugated
Purification	The antibody was affinity-purified from rabbit anti-serum by affinity-chromatography.
Dilution Range	WB 1:500-1:2000 ELISA 1:10000
Formulation	PBS, 50% Glycerol, 0.5% BSA and 0.02% Sodium Azide.
Isotype	IgG
Storage Instruction	Store at -20°C for up to 1 year from the date of receipt, and avoid repeat freeze-thaw cycles.

TARGET INFORMATION

Gene ID	468
Gene Symbol	ATF4
Uniprot ID	ATF4_HUMAN
Immunogen	Synthesized peptide derived from CREB-2. at amino acid range: 160-240
Immunogen Region	160-240
Specificity	ATF4 polyclonal antibody (Cyclic Amp-Dependent Transcription Factor Atf-4) binds to endogenous Cyclic Amp-Dependent Transcription Factor Atf-4 at the amino acid region 160-240.
Immunogen Sequence	



Western blot analysis of A549 cells using CREB-2 Polyclonal Antibody

This product is suitable for in-vitro studies under the RESEARCH USE ONLY [RUO] licence. This product must not be used as for diagnostic or other medical purposes.
St John's Laboratory Ltd, Knowledge Dock Business Centre, University Way, London, E16 2RD | Tel: 0208 223 3081