

Anti-CRABP2 antibody (10-90 Internal) (STJ92459)

STJ92459

GENERAL INFORMATION

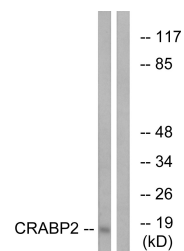
Product Type	Primary antibodies
Short Description	Rabbit polyclonal antibody anti-Cellular Retinoic Acid-Binding Protein 2 (10-90 Internal) is suitable for use in Western Blot, Immunohistochemistry, Immunofluorescence and ELISA research applications.
Applications	WB, IHC-P, IF-P, ELISA
Host/Source	Rabbit
Reactivity	Human, Mouse, Rat

PRODUCT PROPERTIES

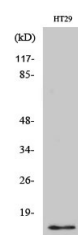
Clonality	Polyclonal
Clone ID	
Concentration	1 mg/mL
Conjugation	Unconjugated
Purification	The antibody was affinity-purified from rabbit anti-serum by affinity-chromatography.
Dilution Range	WB 1:500-1:2000 IHC 1:100-1:300 ELISA 1:20000
Formulation	PBS, 50% Glycerol, 0.5% BSA and 0.02% Sodium Azide.
Isotype	IgG
Storage Instruction	Store at -20°C for up to 1 year from the date of receipt, and avoid repeat freeze-thaw cycles.

TARGET INFORMATION

Gene ID	1382
Gene Symbol	CRABP2
Uniprot ID	RABP2_HUMAN
Immunogen Region	The antiserum was produced against synthesized peptide derived from human CRABP2 at amino acid range 41-90
Immunogen Region	10-90 Internal
Specificity	CRABP2 polyclonal antibody (Cellular Retinoic Acid-Binding Protein 2) binds to endogenous Cellular Retinoic Acid-Binding Protein 2 at the amino acid region 10-90 Internal.
Immunogen Sequence	



Western blot analysis of lysates from HT-29 cells, using CRABP2 Antibody. The lane on the right is blocked with the synthesized peptide.



Western blot analysis of various cells using CRABP2-II Polyclonal Antibody