

Anti-PLA2G4E antibody (370-450 Internal) (STJ92452)

STJ92452

GENERAL INFORMATION

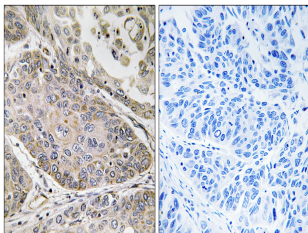
Product Type	Primary antibodies
Short Description	Rabbit polyclonal antibody anti-Cytosolic Phospholipase A2 Epsilon (370-450 Internal) is suitable for use in Immunohistochemistry, Immunofluorescence and ELISA research applications.
Applications	IHC-P, IF-P, ELISA
Host/Source	Rabbit
Reactivity	Human, Rat, Mouse

PRODUCT PROPERTIES

Clonality	Polyclonal
Clone ID	
Concentration	1 mg/mL
Conjugation	Unconjugated
Purification	The antibody was affinity-purified from rabbit anti-serum by affinity-chromatography.
Dilution Range	IHC 1:100-1:300 ELISA 1:40000
Formulation	PBS, 50% Glycerol, 0.5% BSA and 0.02% Sodium Azide.
Isotype	IgG
Storage	Store at -20°C for up to 1 year from the date of receipt, and avoid repeat freeze-thaw cycles.
Instruction	

TARGET INFORMATION

Gene ID	123745
Gene Symbol	PLA2G4E
Uniprot ID	PA24E_HUMAN
Immunogen	The antiserum was produced against synthesized peptide derived from human PLA2G4E at amino acid range 401-450
Immunogen Region	370-450 Internal
Specificity	PLA2G4E polyclonal antibody (Cytosolic Phospholipase A2 Epsilon) binds to endogenous Cytosolic Phospholipase A2 Epsilon at the amino acid region 370-450 Internal.
Immunogen Sequence	



Immunohistochemistry analysis of paraffin-embedded human lung carcinoma, using PLA2G4E Antibody. The picture on the right is blocked with the synthesized peptide.