

Anti-PLA2G4D antibody (500-580 Internal) (STJ92451)

STJ92451

GENERAL INFORMATION

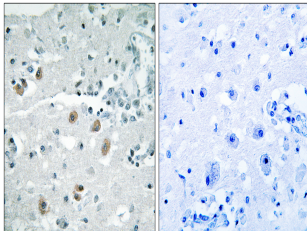
Product Type	Primary antibodies
Short Description	Rabbit polyclonal antibody anti-Cytosolic Phospholipase A2 Delta (500-580 Internal) is suitable for use in Immunohistochemistry, Immunofluorescence and ELISA research applications.
Applications	IHC-P, IF-P, ELISA
Host/Source	Rabbit
Reactivity	Human, Rat, Mouse

PRODUCT PROPERTIES

Clonality	Polyclonal
Clone ID	
Concentration	1 mg/mL
Conjugation	Unconjugated
Purification	The antibody was affinity-purified from rabbit anti-serum by affinity-chromatography.
Dilution Range	IHC 1:100-1:300 ELISA 1:40000
Formulation	PBS, 50% Glycerol, 0.5% BSA and 0.02% Sodium Azide.
Isotype	IgG
Storage	Store at -20°C for up to 1 year from the date of receipt, and avoid repeat freeze-thaw cycles.
Instruction	

TARGET INFORMATION

Gene ID	283748
Gene Symbol	PLA2G4D
Uniprot ID	PA24D_HUMAN
Immunogen	The antiserum was produced against synthesized peptide derived from human PLA2G4D at amino acid range 531-580
Immunogen Region	500-580 Internal
Specificity	PLA2G4D polyclonal antibody (Cytosolic Phospholipase A2 Delta) binds to endogenous Cytosolic Phospholipase A2 Delta at the amino acid region 500-580 Internal.
Immunogen Sequence	



Immunohistochemistry analysis of paraffin-embedded human brain, using PLA2G4D Antibody. The picture on the right is blocked with the synthesized peptide.

This product is suitable for in-vitro studies under the RESEARCH USE ONLY [RUO] licence. This product must not be used as for diagnostic or other medical purposes.
St John's Laboratory Ltd, Knowledge Dock Business Centre, University Way, London, E16 2RD | Tel: 0208 223 3081