

Anti-PLA2G4C antibody (270-350 Internal) (STJ92450)

STJ92450

GENERAL INFORMATION

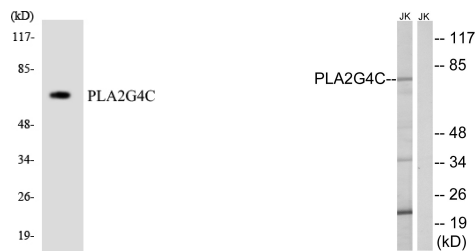
Product Type	Primary antibodies
Short Description	Rabbit polyclonal antibody anti-Cytosolic Phospholipase A2 Gamma (270-350 Internal) is suitable for use in Western Blot and ELISA research applications.
Applications	WB, ELISA
Host/Source	Rabbit
Reactivity	Human, Rat, Mouse

PRODUCT PROPERTIES

Clonality	Polyclonal
Clone ID	
Concentration	1 mg/mL
Conjugation	Unconjugated
Purification	The antibody was affinity-purified from rabbit anti-serum by affinity-chromatography.
Dilution Range	WB 1:500-1:2000 ELISA 1:20000
Formulation	PBS, 50% Glycerol, 0.5% BSA and 0.02% Sodium Azide.
Isotype	IgG
Storage Instruction	Store at -20°C for up to 1 year from the date of receipt, and avoid repeat freeze-thaw cycles.

TARGET INFORMATION

Gene ID	8605
Gene Symbol	PLA2G4C
Uniprot ID	PA24C_HUMAN
Immunogen	The antiserum was produced against synthesized peptide derived from human PLA2G4C at amino acid range 301-350
Immunogen Region	270-350 Internal
Specificity	PLA2G4C polyclonal antibody (Cytosolic Phospholipase A2 Gamma) binds to endogenous Cytosolic Phospholipase A2 Gamma at the amino acid region 270-350 Internal.
Immunogen Sequence	



Western blot analysis of the lysates from HeLa cells using PLA2G4C antibody.

Western blot analysis of lysates from Jurkat cells, using PLA2G4C Antibody. The lane on the right is blocked with the synthesized peptide.

This product is suitable for in-vitro studies under the RESEARCH USE ONLY [RUO] licence. This product must not be used as for diagnostic or other medical purposes.
St John's Laboratory Ltd, Knowledge Dock Business Centre, University Way, London, E16 2RD | Tel: 0208 223 3081