

Anti-PLA2G4A antibody (440-520) (STJ92449)

STJ92449

GENERAL INFORMATION

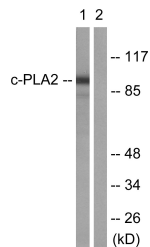
| | |
|--------------------------|--|
| Product Type | Primary antibodies |
| Short Description | Rabbit polyclonal antibody anti-Cytosolic Phospholipase A2 (440-520) is suitable for use in Western Blot, Immunohistochemistry, Immunofluorescence, Immunocytochemistry and ELISA research applications. |
| Applications | WB, IHC-P, IF, ICC, ELISA |
| Host/Source | Rabbit |
| Reactivity | Human, Mouse, Rat |

PRODUCT PROPERTIES

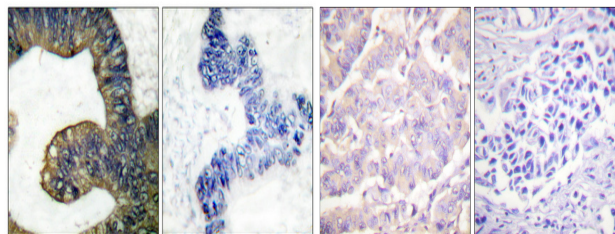
| | |
|----------------------------|--|
| Clonality | Polyclonal |
| Clone ID | |
| Concentration | 1 mg/mL |
| Conjugation | Unconjugated |
| Purification | The antibody was affinity-purified from rabbit anti-serum by affinity-chromatography. |
| Dilution Range | WB 1:500-1:2000 IHC 1:100-1:300 IF 1:200-1:1000 ELISA 1:10000 |
| Formulation | PBS, 50% Glycerol, 0.5% BSA and 0.02% Sodium Azide. |
| Isotype | IgG |
| Storage Instruction | Store at -20°C for up to 1 year from the date of receipt, and avoid repeat freeze-thaw cycles. |

TARGET INFORMATION

| | |
|---------------------------|---|
| Gene ID | 5321 |
| Gene Symbol | PLA2G4A |
| Uniprot ID | PA24A_HUMAN |
| Immunogen | The antiserum was produced against synthesized peptide derived from human c-PLA2 at amino acid range 471-520 |
| Immunogen Region | 440-520 |
| Specificity | PLA2G4A polyclonal antibody (Cytosolic Phospholipase A2) binds to endogenous Cytosolic Phospholipase A2 at the amino acid region 440-520. |
| Immunogen Sequence | |

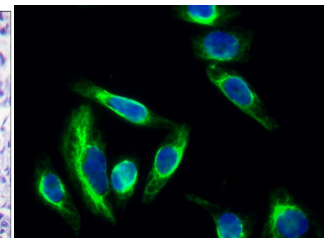


Western blot analysis of lysates from HeLa cells, treated with TNF- α 20ng/ml 30', using c-PLA2 Antibody. The lane on the right is blocked with the synthesized peptide.



Immunohistochemical analysis of paraffin-embedded Human colon cancer. Antibody was diluted at 1:100 (4°C overnight). High-pressure and temperature Tris-EDTA, pH8.0 was used for antigen retrieval. Negative control (right) obtained from antibody was pre-absorbed by immunogen peptide.

Immunohistochemistry analysis of paraffin-embedded human colon carcinoma tissue, using c-PLA2 Antibody. The picture on the right is blocked with the synthesized peptide.



Immunofluorescence analysis of HeLa cell. 1, c-PLA2 Polyclonal Antibody (green) was diluted at 1:200 (4°C overnight), 2, Goat Anti Rabbit Alexa Fluor 488 Catalog: (NA was diluted at 1:1000 (room temperature, 50min). 3 DAPI (blue) 10min.

This product is suitable for in-vitro studies under the RESEARCH USE ONLY [RUO] licence. This product must not be used as for diagnostic or other medical purposes.
St John's Laboratory Ltd, Knowledge Dock Business Centre, University Way, London, E16 2RD | Tel: 0208 223 3081