

Anti-CPA5 antibody (60-140 Internal) (STJ92446)

STJ92446

GENERAL INFORMATION

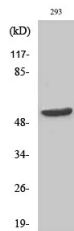
Product Type	Primary antibodies
Short Description	Rabbit polyclonal affinity-purified anti-Carboxypeptidase A5 (60-140 Internal) is suitable for use in Western Blot and ELISA research applications.
Applications	WB, ELISA
Host/Source	Rabbit
Reactivity	Human, Mouse

PRODUCT PROPERTIES

Clonality	Polyclonal
Clone ID	
Concentration	1 mg/mL
Conjugation	Unconjugated
Purification	The antibody was affinity-purified from rabbit anti-serum by affinity-chromatography.
Dilution Range	WB 1:500-1:2000 ELISA 1:20000
Formulation	PBS, 50% Glycerol, 0.5% BSA and 0.02% Sodium Azide.
Isotype	IgG
Storage Instruction	Store at -20°C for up to 1 year from the date of receipt, and avoid repeat freeze-thaw cycles.

TARGET INFORMATION

Gene ID	93979
Gene Symbol	CPA5
Uniprot ID	CBPA5_HUMAN
Immunogen	The antiserum was produced against synthesized peptide derived from human CPA5 at amino acid range 91-140
Immunogen Region	60-140 Internal
Specificity	CPA5 polyclonal antibody (Carboxypeptidase A5) binds to endogenous Carboxypeptidase A5 at the amino acid region 60-140 Internal.
Immunogen Sequence	



Western blot analysis of various cells using CPA5 Polyclonal Antibody