

Anti-COX4I2 antibody (1-80 Internal) (STJ92440)

STJ92440

GENERAL INFORMATION

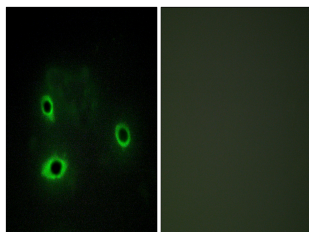
Product Type	Primary antibodies
Short Description	Rabbit polyclonal antibody anti-Cytochrome C Oxidase Subunit 4 Isoform 2-Mitochondrial (1-80 Internal) is suitable for use in Western Blot, Immunohistochemistry, Immunofluorescence, Immunocytochemistry and ELISA research applications.
Applications	WB, IHC-P, IF, ICC, ELISA
Host/Source	Rabbit
Reactivity	Human, Mouse, Rat

PRODUCT PROPERTIES

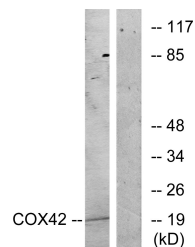
Clonality	Polyclonal
Clone ID	
Concentration	1 mg/mL
Conjugation	Unconjugated
Purification	The antibody was affinity-purified from rabbit anti-serum by affinity-chromatography.
Dilution	WB 1:500-1:2000
Range	IHC 1:100-1:300 IF 1:200-1:1000 ELISA 1:10000
Formulation	PBS, 50% Glycerol, 0.5% BSA and 0.02% Sodium Azide.
Isotype	IgG
Storage Instruction	Store at -20°C for up to 1 year from the date of receipt, and avoid repeat freeze-thaw cycles.

TARGET INFORMATION

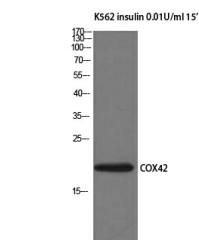
Gene ID	84701
Gene Symbol	COX4I2
Uniprot ID	COX42_HUMAN
Immunogen	The antiserum was produced against synthesized peptide derived from human COX42 at amino acid range 31-80
Immunogen Region	1-80 Internal
Specificity	COX4I2 polyclonal antibody (Cytochrome C Oxidase Subunit 4 Isoform 2-Mitochondrial) binds to endogenous Cytochrome C Oxidase Subunit 4 Isoform 2-Mitochondrial at the amino acid region 1-80 Internal.
Immunogen Sequence	



Immunofluorescence analysis of COS7 cells, using COX42 Antibody. The picture on the right is blocked with the synthesized peptide.



Western blot analysis of lysates from K562 cells, treated with insulin 0.01U/ml 15', using COX42 Antibody. The lane on the right is blocked with the synthesized peptide.



Western blot analysis of K562 insulin 0.01U/ml 15' cells using COX4I2 Polyclonal Antibody

This product is suitable for in-vitro studies under the RESEARCH USE ONLY [RUO] licence. This product must not be used as for diagnostic or other medical purposes.
St John's Laboratory Ltd, Knowledge Dock Business Centre, University Way, London, E16 2RD | Tel: 0208 223 3081