

Anti-COX15 antibody (150-230 Internal) (STJ92435)

STJ92435

GENERAL INFORMATION

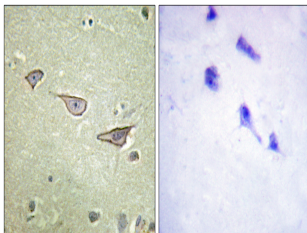
Product Type	Primary antibodies
Short Description	Rabbit polyclonal antibody anti-Cytochrome C Oxidase Assembly Protein Cox15 Homolog (150-230 Internal) is suitable for use in Immunohistochemistry, Immunofluorescence and ELISA research applications.
Applications	IHC-P, IF-P, ELISA
Host/Source	Rabbit
Reactivity	Human, Mouse, Rat

PRODUCT PROPERTIES

Clonality	Polyclonal
Clone ID	
Concentration	1 mg/mL
Conjugation	Unconjugated
Purification	The antibody was affinity-purified from rabbit anti-serum by affinity-chromatography.
Dilution	IHC 1:100-1:300
Range	ELISA 1:5000
Formulation	PBS, 50% Glycerol, 0.5% BSA and 0.02% Sodium Azide.
Isotype	IgG
Storage	Store at -20°C for up to 1 year from the date of receipt, and avoid repeat freeze-thaw cycles.
Instruction	

TARGET INFORMATION

Gene ID	1355
Gene Symbol	COX15
Uniprot ID	COX15_HUMAN
Immunogen	The antiserum was produced against synthesized peptide derived from human COX15 at amino acid range 181-230
Immunogen Region	150-230 Internal
Specificity	COX15 polyclonal antibody (Cytochrome C Oxidase Assembly Protein Cox15 Homolog) binds to endogenous Cytochrome C Oxidase Assembly Protein Cox15 Homolog at the amino acid region 150-230 Internal.
Immunogen Sequence	



Immunohistochemistry analysis of paraffin-embedded human brain tissue, using COX15 Antibody. The picture on the right is blocked with the synthesized peptide.