

Anti-MAP3K8 antibody (230-310) (STJ92431)

STJ92431

GENERAL INFORMATION

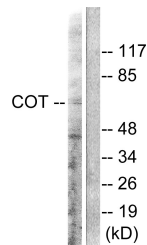
Product Type	Primary antibodies
Short Description	Rabbit polyclonal antibody anti-Mitogen-Activated Protein Kinase Kinase Kinase 8 (230-310) is suitable for use in Western Blot, Immunohistochemistry, Immunofluorescence, Immunocytochemistry and ELISA research applications.
Applications	WB, IHC-P, IF, ICC, ELISA
Host/Source	Rabbit
Reactivity	Human, Mouse, Rat

PRODUCT PROPERTIES

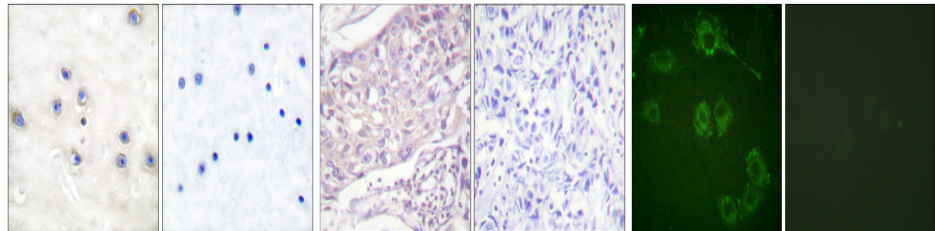
Clonality	Polyclonal
Clone ID	
Concentration	1 mg/mL
Conjugation	Unconjugated
Purification	The antibody was affinity-purified from rabbit anti-serum by affinity-chromatography.
Dilution Range	WB 1:500-1:2000 IHC 1:100-1:300 IF 1:200-1:1000 ELISA 1:40000
Formulation	PBS, 50% Glycerol, 0.5% BSA and 0.02% Sodium Azide.
Isotype	IgG
Storage Instruction	Store at -20°C for up to 1 year from the date of receipt, and avoid repeat freeze-thaw cycles.

TARGET INFORMATION

Gene ID	1326
Gene Symbol	MAP3K8
Uniprot ID	M3K8_HUMAN
Immunogen	The antiserum was produced against synthesized peptide derived from human COT at amino acid range 256-305
Immunogen Region	230-310
Specificity	MAP3K8 polyclonal antibody (Mitogen-Activated Protein Kinase Kinase Kinase 8) binds to endogenous Mitogen-Activated Protein Kinase Kinase Kinase 8 at the amino acid region 230-310.
Immunogen Sequence	



Western blot analysis of lysates from 293 cells, treated with LPS 100ng/ml 30', using COT Antibody. The lane on the right is blocked with the synthesized peptide.



Immunohistochemistry analysis of paraffin-embedded human brain tissue, using COT Antibody. The picture on the right is blocked with the synthesized peptide.

Immunohistochemical analysis of paraffin-embedded Human breast cancer. Antibody was diluted at 1:100 (4°C overnight). High-pressure and temperature Tris-EDTA, pH8.0 was used for antigen retrieval. Negative control (right) obtained from antibody was pre-absorbed by immunogen peptide.

Immunofluorescence analysis of HUVEC cells, using COT Antibody. The picture on the right is blocked with the synthesized peptide.

This product is suitable for in-vitro studies under the RESEARCH USE ONLY [RUO] licence. This product must not be used as for diagnostic or other medical purposes.
St John's Laboratory Ltd, Knowledge Dock Business Centre, University Way, London, E16 2RD | Tel: 0208 223 3081