

Anti-CTTN antibody (410-490) (STJ92429)

STJ92429

GENERAL INFORMATION

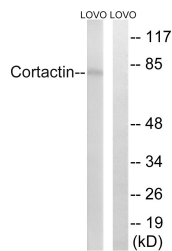
Product Type	Primary antibodies
Short Description	Rabbit polyclonal antibody anti-Src Substrate Cortactin (410-490) is suitable for use in Western Blot, Immunohistochemistry, Immunofluorescence, Immunocytochemistry and ELISA research applications.
Applications	WB, IHC-P, IF, ICC, ELISA
Host/Source	Rabbit
Reactivity	Human, Mouse, Rat, Monkey

PRODUCT PROPERTIES

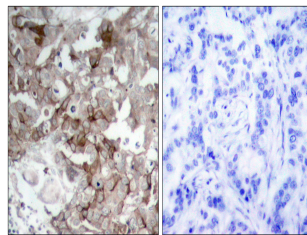
Clonality	Polyclonal
Clone ID	
Concentration	1 mg/mL
Conjugation	Unconjugated
Purification	The antibody was affinity-purified from rabbit anti-serum by affinity-chromatography.
Dilution Range	WB 1:500-1:2000 IHC 1:100-1:300 IF 1:200-1:1000 ELISA 1:20000
Formulation	PBS, 50% Glycerol, 0.5% BSA and 0.02% Sodium Azide.
Isotype	IgG
Storage Instruction	Store at -20°C for up to 1 year from the date of receipt, and avoid repeat freeze-thaw cycles.

TARGET INFORMATION

Gene ID	2017
Gene Symbol	CTTN
Uniprot ID	SRC8_HUMAN
Immunogen	The antiserum was produced against synthesized peptide derived from mouse Cortactin at amino acid range 441-490
Immunogen Region	410-490
Specificity	CTTN polyclonal antibody (Src Substrate Cortactin) binds to endogenous Src Substrate Cortactin at the amino acid region 410-490.
Immunogen Sequence	



Western blot analysis of lysates from LOVO cells, using Cortactin Antibody. The lane on the right is blocked with the synthesized peptide.



Immunohistochemistry analysis of paraffin-embedded human breast carcinoma tissue, using Cortactin Antibody. The picture on the right is blocked with the synthesized peptide.