

Anti-COP1 antibody (630-710 C-Term) (STJ92424)

STJ92424

GENERAL INFORMATION

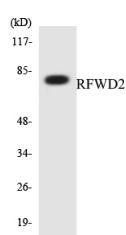
Product Type	Primary antibodies
Short Description	Rabbit polyclonal antibody anti-E3 Ubiquitin-Protein Ligase Cop1 (630-710 C-Term) is suitable for use in Western Blot and ELISA research applications.
Applications	WB, ELISA
Host/Source	Rabbit
Reactivity	Human, Mouse

PRODUCT PROPERTIES

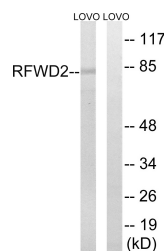
Clonality	Polyclonal
Clone ID	
Concentration	1 mg/mL
Conjugation	Unconjugated
Purification	The antibody was affinity-purified from rabbit anti-serum by affinity-chromatography.
Dilution Range	WB 1:500-1:2000 ELISA 1:20000
Formulation	PBS, 50% Glycerol, 0.5% BSA and 0.02% Sodium Azide.
Isotype	IgG
Storage	Store at -20°C for up to 1 year from the date of receipt, and avoid repeat freeze-thaw cycles.
Instruction	

TARGET INFORMATION

Gene ID	64326
Gene Symbol	COP1
Uniprot ID	COP1_HUMAN
Immunogen	The antiserum was produced against synthesized peptide derived from human RFWD2 at amino acid range 661-710
Immunogen Region	630-710 C-Term
Specificity	COP1 polyclonal antibody (E3 Ubiquitin-Protein Ligase Cop1) binds to endogenous E3 Ubiquitin-Protein Ligase Cop1 at the amino acid region 630-710 C-Term.
Immunogen Sequence	



Western blot analysis of the lysates from HepG2 cells using RFWD2 antibody.



Western blot analysis of lysates from LOVO cells, using RFWD2 Antibody. The lane on the right is blocked with the synthesized peptide.