

Anti-COP1 antibody (330-410) (STJ92423)

STJ92423

GENERAL INFORMATION

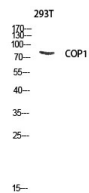
Product Type	Primary antibodies
Short Description	Rabbit polyclonal antibody anti-E3 Ubiquitin-Protein Ligase Cop1 (330-410) is suitable for use in Western Blot and ELISA research applications.
Applications	WB, ELISA
Host/Source	Rabbit
Reactivity	Human, Mouse

PRODUCT PROPERTIES

Clonality	Polyclonal
Clone ID	
Concentration	1 mg/mL
Conjugation	Unconjugated
Purification	The antibody was affinity-purified from rabbit anti-serum by affinity-chromatography.
Dilution Range	WB 1:500-1:2000 ELISA 1:40000
Formulation	PBS, 50% Glycerol, 0.5% BSA and 0.02% Sodium Azide.
Isotype	IgG
Storage	Store at -20°C for up to 1 year from the date of receipt, and avoid repeat freeze-thaw cycles.
Instruction	

TARGET INFORMATION

Gene ID	64326
Gene Symbol	COP1
Uniprot ID	COP1_HUMAN
Immunogen	The antiserum was produced against synthesized peptide derived from human RFWD2 at amino acid range 353-402
Immunogen Region	330-410
Specificity	COP1 polyclonal antibody (E3 Ubiquitin-Protein Ligase Cop1) binds to endogenous E3 Ubiquitin-Protein Ligase Cop1 at the amino acid region 330-410.
Immunogen Sequence	



Western blot analysis of 293T lysis using COP1 antibody. Antibody was diluted at 1:1000