

Anti-COPZ1 antibody (30-110 N-Term) (STJ92422)

STJ92422

GENERAL INFORMATION

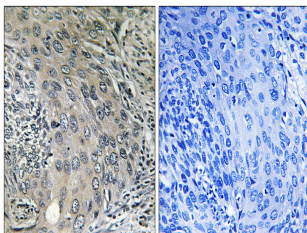
Product Type	Primary antibodies
Short Description	Rabbit polyclonal antibody anti-Coatomer Subunit Zeta-1 (30-110 N-Term) is suitable for use in Western Blot, Immunohistochemistry, Immunofluorescence and ELISA research applications.
Applications	WB, IHC-P, IF-P, ELISA
Host/Source	Rabbit
Reactivity	Human, Mouse, Monkey

PRODUCT PROPERTIES

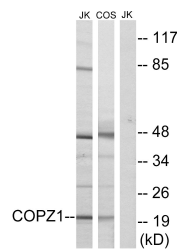
Clonality	Polyclonal
Clone ID	
Concentration	1 mg/mL
Conjugation	Unconjugated
Purification	The antibody was affinity-purified from rabbit anti-serum by affinity-chromatography.
Dilution Range	WB 1:500-1:2000 IHC 1:100-1:300 ELISA 1:10000
Formulation	PBS, 50% Glycerol, 0.5% BSA and 0.02% Sodium Azide.
Isotype	IgG
Storage Instruction	Store at -20°C for up to 1 year from the date of receipt, and avoid repeat freeze-thaw cycles.

TARGET INFORMATION

Gene ID	22818
Gene Symbol	COPZ1
Uniprot ID	COPZ1_HUMAN
Immunogen	The antiserum was produced against synthesized peptide derived from human COPZ1 at amino acid range 11-60
Immunogen Region	30-110 N-Term
Specificity	COPZ1 polyclonal antibody (Coatomer Subunit Zeta-1) binds to endogenous Coatomer Subunit Zeta-1 at the amino acid region 30-110 N-Term.
Immunogen Sequence	



Immunohistochemistry analysis of paraffin-embedded human cervix carcinoma tissue, using COPZ1 Antibody. The picture on the right is blocked with the synthesized peptide.



Western blot analysis of lysates from Jurkat and COS cells, using COPZ1 Antibody. The lane on the right is blocked with the synthesized peptide.



Western blot analysis of various cells using COP Zeta 1 Polyclonal Antibody diluted at 1: 500