

Anti-CNTN6 antibody (300-380 Internal) (STJ92421)

STJ92421

GENERAL INFORMATION

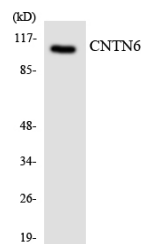
Product Type	Primary antibodies
Short Description	Rabbit polyclonal antibody anti-Contactin-6 (300-380 Internal) is suitable for use in Western Blot and ELISA research applications.
Applications	WB, ELISA
Host/Source	Rabbit
Reactivity	Human, Mouse

PRODUCT PROPERTIES

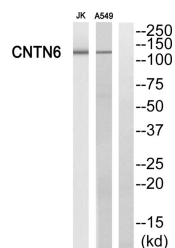
Clonality	Polyclonal
Clone ID	
Concentration	1 mg/mL
Conjugation	Unconjugated
Purification	The antibody was affinity-purified from rabbit anti-serum by affinity-chromatography.
Dilution Range	WB 1:500-1:2000 ELISA 1:40000
Formulation	PBS, 50% Glycerol, 0.5% BSA and 0.02% Sodium Azide.
Isotype	IgG
Storage Instruction	Store at -20°C for up to 1 year from the date of receipt, and avoid repeat freeze-thaw cycles.

TARGET INFORMATION

Gene ID	27255
Gene Symbol	CNTN6
Uniprot ID	CNTN6_HUMAN
Immunogen	The antiserum was produced against synthesized peptide derived from human CNTN6 at amino acid range 331-380
Immunogen Region	300-380 Internal
Specificity	CNTN6 polyclonal antibody (Contactin-6) binds to endogenous Contactin-6 at the amino acid region 300-380 Internal.
Immunogen Sequence	



Western blot analysis of the lysates from HeLa cells using CNTN6 antibody.



Western blot analysis of CNTN6 Antibody. The lane on the right is blocked with the CNTN6 peptide.

This product is suitable for in-vitro studies under the RESEARCH USE ONLY [RUO] licence. This product must not be used as for diagnostic or other medical purposes.
St John's Laboratory Ltd, Knowledge Dock Business Centre, University Way, London, E16 2RD | Tel: 0208 223 3081